



Russ W
Copy

OFFICE OF THE ATTORNEY GENERAL
STATE OF ILLINOIS

February 22, 2016

Lisa Madigan
ATTORNEY GENERAL

Angela Fyans-Jimenez, Counsel
Sorling Northrup
1 North Old State Capitol Plaza, Suite 200
P.O. Box 5131
Springfield, IL 62705

Re: US Cellular Coliseum, Bloomington, IL
2010-DRC-3937

Dear Ms. Fyans-Jimenez:

On June 4, 2015, our office conducted an inspection of the accessibility work completed at the above-referenced facility to determine if it was in compliance with state and federal accessibility laws and standards. We are pleased that many of the violations have been remedied. We found violations # 1 -17, cited in our Letter of Finding dated March 1, 2012, have been substantially remedied. However, violation # 18 has not been corrected as previously agreed upon. We have attached a copy of Attachment A, along with the results of our inspection. Additionally, we identified new violations since our initial inspections. The new violations can be found in Attachment B.

Within thirty (30) days receipt of this letter, please submit a proposal for bringing the violations listed in Attachment s A and B into compliance with the EBA and ADA. In your proposal, please include drawings of any construction or modifications to be done and an estimated timeline for completing each part of the project. After reviewing your proposal, we will contact you to discuss it further. If you have any questions, please feel free to contact me at (217) 524-1921 or by e-mail at mharden@atg.state.il.us.



US Cellular Coliseum, Bloomington, IL

2012-DRC-4493

Page 2

Sincerely,

A handwritten signature in cursive script that reads "Michelle Harden".

Michelle Harden, Disability Specialist

Enclosures

**U.S. Cellular Coliseum
101 South Madison Street
Bloomington, Illinois
2010-DRC-3937**

ATTACHMENT A

NOTE – Yellow highlighted items are the results of our site inspection conducted on June 4, 2015.

I. Main Entrances

1. There is no directional signage at the inaccessible entrance on Front Street leading to an accessible entrance. IAC § 400.310(k)(3)(D); Standards § 4.1.3(8)(d).

Inspection Results (6/4/2015): Violation corrected.

II. Suites

2. The counters in all the suites exceed the maximum height requirement of 34" and lack an auxiliary counter [36"]. IAC § 400.310(w)(4)-(5); Standards § 4.32.4.

Inspection Results (6/4/2015): Violation corrected.

3. The dining bars in all suites exceed the maximum height requirement of 34" and lack an auxiliary counter [42"]. IAC § 400.310(w)(4)-(5); Standards § 4.32.4.

Inspection Results (6/4/2015): Violation corrected.

4. The suites lack a wheelchair accessible seat [1 wheelchair accessible seat is required if there are 1-25 fixed seats]. IAC §§ 400.320(a)(1)-(3); 4.1.3(19)(a).

Inspection Results (6/4/2015): Violation corrected.

5. The bars for hanging coats in all suites exceed the maximum height requirement of 48" [66"]. IAC §§ 400.310(p)(3), 400.220(e); Standards § 4.2.5, Fig. 5(a).

Inspection Results (6/4/2015): Violation corrected.

III. Ramp

(leading to the main floor)

6. The slope of the ramp located on the west side of the arena exceeds 8.33% [12.5% - 13.5%]. IAC §§ 400.310(e)(2), Illustration B, Fig. 16; Standards §§ 4.8.2, Fig. 16.

Inspection Results (6/4/2015): Violation corrected.

7. The slope of the ramp located on the east side of the arena exceeds 8.33% [10% - 12.9%]. IAC §§ 400.310(e)(2), Illustration B, Fig. 16: Standards §§ 4.8.2, Fig. 16.

Inspection Results (6/4/2015): **Violation corrected.**

IV. Toilet Room

(Main Floor, near state end of arena)

8. There is no signage posted for the toilet room. IAC §§ 400.310(n)(13), 400.310(u)(5); Standards § 4.30.6.

Inspection Results (6/4/2015): **Violation corrected.**

9. There is no grab bar mounted on the back wall behind the toilet. Standards §§ 4.16.4, 4.22.4, 4.26.1, Fig. 29(a).

Inspection Results (6/4/2015): **Violation corrected.**

10. There is no grab bar mounted on the wall beside the toilet. Standards §§ 4.16.4, 4.22.4, 4.26.1, Fig. 29(b).

Inspection Results (6/4/2015): **Violation corrected.**

V. Men's Locker Room

11. There is no accessible stall or water closet. 71 IAC § 400.310(n), Standards §§ 4.1.3(11), 4.22.

Inspection Results (6/4/2015): **Violation corrected.**

12. There is no accessible lavatory. 71 IAC § 400.310(n). Standards §§ 4.1.3(11), 4.22.

Inspection Results (6/4/2015): **Violation corrected.**

13. The bottom edge of the mirror is mounted higher than 40" from the floor finish. IAC § 400.310(n)(70(F)); Illustration B, Fig. 31.

Inspection Results (6/4/2015): **Violation corrected.**

VI. Team Locker Room

14. There is no directional signage from the main floor to the accessible team locker room toilet. IAC § 400.310(u)(8)(D).

Inspection Results (6/4/2015): **Violation corrected.**

15. There is no grab bar mounted in the bathtub. IAC § 400.310(o)(8)(A)(iii); Standards § 4.20.4, Illustration B, Fig. 33 and 34.

Inspection Results (6/4/2015): **Violation corrected.**

16. There is no grab bar mounted in the shower. IAC § 400.310(o)(8)(B)(iii); Standards § 4.21.4, Illustration B, Fig. 27.

Inspection Results (6/4/2015): **Violation corrected.**

VII. Visitors' Locker Room

17. There is no directional signage from the main floor to the accessible visitor locker room toilet. IAC § 400.310(u)(8)(D).

Inspection Results (6/4/2015): **Violation corrected.**

18. There is no accessible shower in the locker room. IAC § 400.310(o)(1); Standards § 4.21.1.

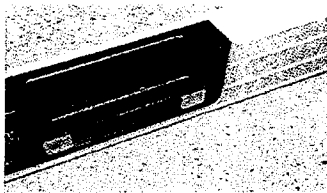
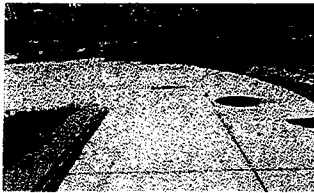
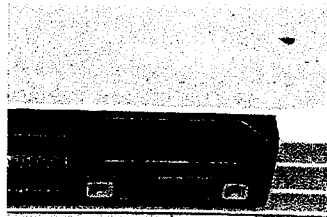
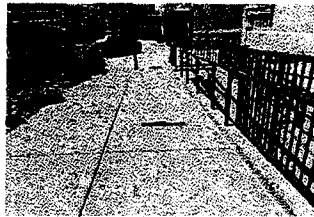
Inspection Results (6/4/2015): **Violation has not been corrected. Where bathtubs or showers are provided, at least one bathtub or shower complying with state and federal accessibility laws must be provided.**

US Cellular Coliseum
101 South Madison Street
Bloomington, IL 61701
2010-DRC-3937

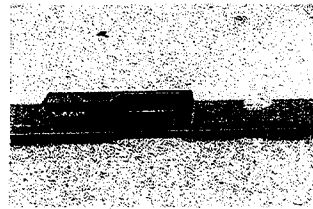
ATTACHMENT B

I. Exterior Routes

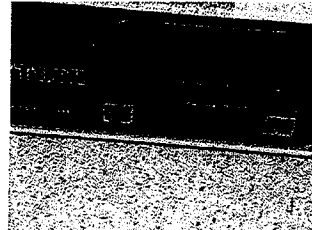
1. Nowhere shall the cross slope of an accessible route exceed 1:50 (2%) [cross slope of sidewalk located on south side of building = 2.9% - 5.4%]. IAC § 400.310(a)(6).



2. Nowhere shall the cross slope of an accessible route exceed 1:50 (2%) [cross slope of sidewalk located along Madison Street = 3.1% - 3.6%]. IAC § 400.310(a)(6).



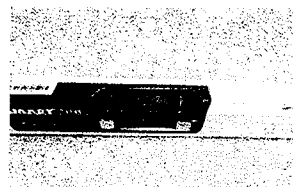
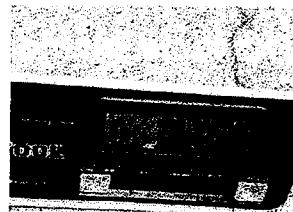
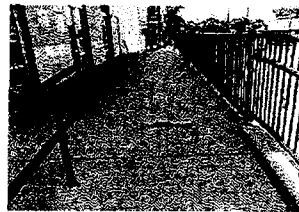
3. The running slope of walking surfaces shall not be steeper than 1:20 (5%) [running slope of sidewalk located along the southeast corner = 5.7%]. IAC § 400.310(a)(6); Standards § 403.3.



4. All stairs, except for in dwelling units, in enclosed stair towers, or set to the side of the path of travel shall have a detectable warning at the top of the stair runs [no detectable warning at top of stair run located on north side of building]. IAC § 400.310(f)(5).

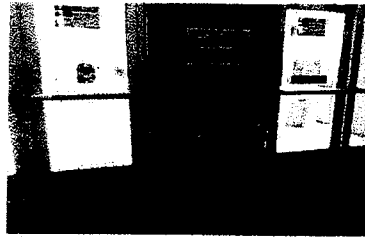


5. Ramps shall have level landings at bottom and top of each ramp and each ramp run [ramp on the north side of the building – top landing cross slope = 2.3% - 3.1%, middle landing running slope = 3.6%]. IAC § 400.310(e)(4); Standards § 405.7.



II. Entrances

6. The force required to open the exterior door to enter the facility exceeds the maximum of 8.5 lbf [accessible entrance (former service entrance) = 15 lbf, 15 lbf, South Side Smoking Area Entrance = 20 lbf, 25 lbf, East Side Box Office Entrance = 23 lbf]. IAC § 400.310(j)(10)(B)(i).
7. The floor or ground area within the required clearances shall be level and clear [running slope on exterior side of Accessible Entrance (former Service Entrance) = 8.7% - 9.1%, running slope on exterior side of South Side Smoking Area Entrance = 6.1% - 6.6%, running slope on exterior side of Madison Street Entrance = 4.9% - 5.2%, cross slope on exterior side of East Side Box Office Entrance = 3.4%]. IAC § 400.310(j)(5); Standards § 404.2.4.4.
8. Clear floor space that allows for a forward or a parallel approach by a person using a wheelchair shall be provided at controls, dispensers, receptacles, and other operable equipment [garbage can located in clear floor space of push button for the power-assisted South Side Entrance]. IAC § 400.310(r)(2); Standards § 309.2.



III. Interior Routes

9. Ramp runs shall have a running slope not steeper than 1:12 (8.33%) [running slope of concrete ramp leading from locker rooms to floor level of arena = 10.1% top, 9.8% bottom]. IAC § 400.310(e)(2); Standards § 405.2.

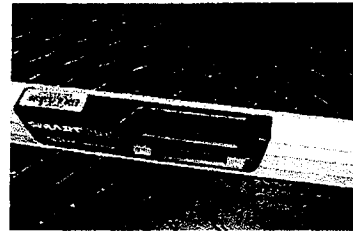
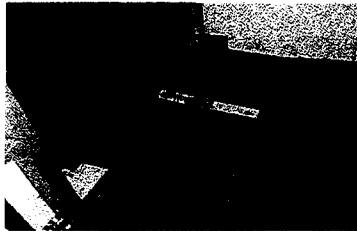


10. Changes in level up to ¼ inch may be vertical and without edge treatment. Changes in level between ¼ inch and ½ inch shall be beveled with a slope not greater than 1:2. If an accessible route has changes in level greater than ½ inch, then a curb ramp, ramp, elevator, or platform lift shall be provided [metal

transition piece that connects the temporary ramp to the upper level of the arena has a ½ change in level]. IAC § 400.310(a)(7); Standards § 403.4.



11. Ramp runs shall have a running slope not steeper than 1:12 (8.33%) [metal transition piece that connects the temporary ramp to the upper level of the arena has a 12.6% running slope]. IAC § 400.310(e)(2); Standards § 405.2.



12. At least one accessible route shall connect accessible building or facility entrances with all accessible spaces and elements within the building or facility [no accessible route to floor level when ice rink is installed]. IAC § 400.310(a)(1)(C); Standards § 206.2.4.

IV. Interior Doors

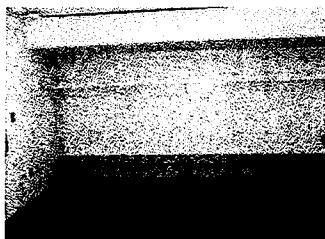
13. The force required to open the interior door exceeds the maximum of 5 lbf [door at base of ramp leading from locker rooms to floor level of arena = 15 lbf, entrance to Budlight Lounge = 7 lbf]. IAC § 400.310(j)(10)(B)(ii); Standards § 404.2.9(1).

V. Locker Rooms

Locker Rooms A (1315) & B (1318)

14. The force required to open the interior door exceeds the maximum of 5 lbf [A door = 12 lbf, B door = 12 lbf, door that connects Locker Rooms A & B = 12 lbf, toilet room doors = 12 lbf & 14 lbf]. IAC § 400.310(j)(10)(B)(ii); Standards § 404.2.9(1).

15. Maneuvering clearances shall extend the full width of the doorway and the required latch side or hinge side clearance [pull side of A door =12" due to wall]. IAC § 300.310(j)(5), Illustration B, Fig. 25(a); Standards § 404.2.4, Fig. 404.2.4.1(a).
16. Where a clear floor or ground space allows a parallel approach to an element and the high side reach is over an obstruction, the height of the obstruction shall be 34 inches maximum and the depth of the obstruction shall be 24 inches maximum. Where the reach depth exceeds 10 inches, the high side reach shall be 46 inches maximum for a reach depth of 24 inches maximum [shelves are located above the 23" deep bench, shelves = 64 ½" high]. Standards § 308.3.2.
17. Clear floor or ground space complying with Standards § 305 shall be provided and shall be positioned at the end of the bench seat and parallel to the short axis of the bench [clear floor space not provided at end of bench]. IAC § 400.320(c)(4); Standards § 903.2.



18. The bench shall provide for back support or shall be affixed to a wall. Back support shall be 42 inches long minimum and shall extend from a point 2 inches maximum above the seat surface to a point 18 inches minimum above the seat surface [dry erase board protrudes 4" from back wall]. Standards § 903.4.



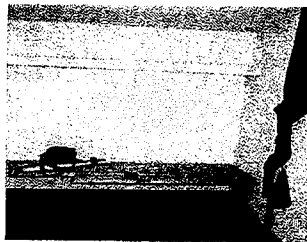
19. Every accessible dressing room shall have a 24 inch by 48 inch bench fixed to the wall along the longer dimension [depth = 23", width = 47"]. IAC § 400.320(c)(4).
20. Mirrors located above lavatories and countertops shall be installed with the bottom edge of the reflecting surface 40 inches maximum above the finish floor or ground. Mirrors not located above lavatories or countertops shall be installed with the bottom edge of the reflecting surface 35 inches maximum above the

finish floor or ground [mirror located above lavatory in toilet room = 50" high].
Standards § 603.3.

21. Where a forward reach is unobstructed, the high forward reach shall be 48 inches maximum and the low forward reach shall be 15 inches minimum above the finish floor or ground [soap dispenser = 51"]. Standards §§ 308.2.1, Fig. 308.2.1.
22. Where bathtubs or showers are provided, at least one bathtub complying with 607 or at least one shower complying with 608 shall be provided [a shower meeting the requirements set forth in 608 is not provided]. Standards § 213.3.6.

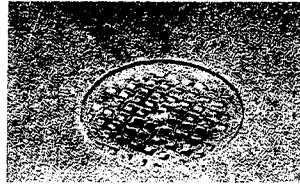
Locker Room C

23. The force required to open the interior door exceeds the maximum of 5 lbf [main door = 10 lbf]. IAC § 400.310(j)(10)(B)(ii); Standards § 404.2.9(1).
24. Where a clear floor or ground space allows a parallel approach to an element and the high side reach is over an obstruction, the height of the obstruction shall be 34 inches maximum and the depth of the obstruction shall be 24 inches maximum. Where the reach depth exceeds 10 inches, the high side reach shall be 46 inches maximum for a reach depth of 24 inches maximum [shelves are located above the 24" deep bench, shelves = 64 ½" high]. Standards § 308.3.2.
25. Every accessible dressing room shall have a 24 inch by 48 inch bench fixed to the wall along the longer dimension [width = 46"]. IAC § 400.320(c)(4).
26. Clear floor or ground space complying with Standards § 305 shall be provided and shall be positioned at the end of the bench seat and parallel to the short axis of the bench [clear floor space not provided at end of bench]. IAC § 400.320(c)(4); Standards § 903.2.



27. Where bathtubs or showers are provided, at least one bathtub complying with 607 or at least one shower complying with 608 shall be provided [a shower meeting the requirements set forth in 608 is not provided]. Standards § 213.3.6.

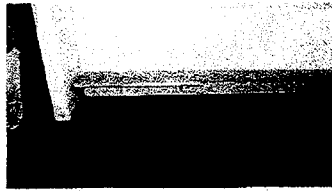
28. If an accessible route has changes in level greater than ½ inch, then a curb ramp, ramp, elevator, or platform lift shall be provided [floor drain = ½" change in level]. IAC § 400.310(a)(7); Standards § 403.4.



29. Mirrors located above lavatories and countertops shall be installed with the bottom edge of the reflecting surface 40 inches maximum above the finish floor or ground. Mirrors not located above lavatories or countertops shall be installed with the bottom edge of the reflecting surface 35 inches maximum above the finish floor or ground [mirror located above lavatory in toilet room = 49 ½" high]. Standards § 603.3.
30. Flush controls shall be located on the open side of the water closet [flush located on closed side of water closet in toilet room]. IAC § 400.410(n)(5)(B)(iv); Standards § 604.6.
31. The centerline of the water closet shall be 18 inches from the side wall [19"]. IAC §§ 400.310(n)(5)(B)(i), Illustration B, Fig. 28.
32. The rear wall grab bar shall be 36 inches long minimum and extend from the centerline of the water closet 12 inches minimum on one side and 24 inches minimum on the other side [rear grab bar is 28" long]. IAC 400.310(n)(5)(B)(iii), Illustration B, Fig. 29(a); Standards §§ 604.5.2, Fig. 604.5.2.

Locker Room D (1208)

33. The force required to open the interior door exceeds the maximum of 5 lbf [main door = 10 lbf]. IAC § 400.310(j)(10)(B)(ii); Standards § 404.2.9(1).
34. Every accessible dressing room shall have a 24 inch by 48 inch bench fixed to the wall along the longer dimension [depth = 22 ¾", width = 47 ½"]. IAC § 400.320(c)(4).
35. Clear floor or ground space complying with Standards § 305 shall be provided and shall be positioned at the end of the bench seat and parallel to the short axis of the bench [clear floor space not provided at end of bench]. IAC § 400.320(c)(4); Standards § 903.2.



36. Where bathtubs or showers are provided, at least one bathtub complying with 607 or at least one shower complying with 608 shall be provided [a shower meeting the requirements set forth in 608 is not provided]. Standards § 213.3.6.
37. Where a clear floor or ground space allows a parallel approach to an element and the high side reach is over an obstruction, the height of the obstruction shall be 34 inches maximum and the depth of the obstruction shall be 24 inches maximum. Where the reach depth exceeds 10 inches, the high side reach shall be 46 inches maximum for a reach depth of 24 inches maximum [coat hooks and shelves are located above the 22 ¾" deep bench, coat hooks = 60" high, shelves = 64 ½" high]. Standards § 308.3.2.

Home Team Locker Room

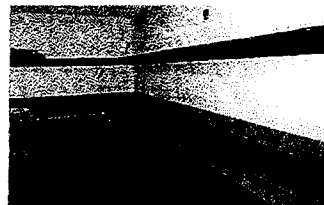
38. The force required to open the interior door exceeds the maximum of 5 lbf [main door = 18 lbf]. IAC § 400.310(j)(10)(B)(ii); Standards § 404.2.9(1).
39. Maneuvering clearances shall extend the full width of the doorway and the required latch side or hinge side clearance [16" due to wall]. IAC § 300.310(j)(5), Illustration B, Fig. 25(a); Standards § 404.2.4, Fig. 404.2.4.1(a).
40. A clear floor space at the lavatory complying with 305, positioned for a forward approach, and knee and toe clearance complying with 306 shall be provided [blocked by coolers]. IAC §§ 400.310(n)(7)(C), Illustration B, Figures 31 and 32; Standards § 606.2.



41. Operable parts shall be places within one or more of the reach ranges specified in 308. A clear floor or ground surface space complying with 305 shall be provided [blocked by coffee machines and cabinetry]. Standards § 309.1.
42. The clear width of walking surfaces shall be 36 inches minimum [hallway width = 31" due to garbage can]. IAC §400.310(a)(2); Standards § 403.5.1.



43. Where bathtubs or showers are provided, at least one bathtub complying with 607 or at least one shower complying with 608 shall be provided [a shower meeting the requirements set forth in 608 is not provided]. Standards § 213.3.6.
44. Where a forward reach is unobstructed, the high forward reach shall be 48 inches maximum and the low forward reach shall be 15 inches minimum above the finish floor or ground [coat hooks = 73 ½"]. Standards §§ 308.2.1, Fig. 308.2.1.
45. Where a clear floor or ground space allows a parallel approach to an element and the high side reach is over an obstruction, the height of the obstruction shall be 34 inches maximum and the depth of the obstruction shall be 24 inches maximum. Where the reach depth exceeds 10 inches, the high side reach shall be 46 inches maximum for a reach depth of 24 inches maximum [coat hooks and shelves along striped wall are located above the 16 ½" deep bench, coat hooks = 59 ½" high, shelves = 63 ½" high]. Standards § 308.3.2.

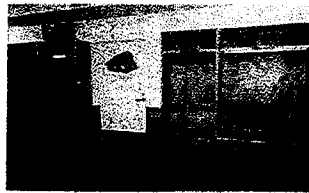


46. Every accessible dressing room shall have a 24 inch by 48 inch bench fixed to the wall along the longer dimension [depth = 16 ½" inches]. The top of the bench seat shall be 17 inches minimum and 19 inches maximum above the finish floor or ground [height = 16 ½" high]. IAC § 400.320(c)(4); Standards § 903.5.
47. Clear floor or ground space complying with Standards § 305 shall be provided and shall be positioned at the end of the bench seat and parallel to the short axis of the bench [clear floor space not provided at end of bench]. IAC § 400.320(c)(4); Standards § 903.2.
48. Where a clear floor or ground space allows a parallel approach to an element and the high side reach is over an obstruction, the height of the obstruction shall be 34 inches maximum and the depth of the obstruction shall be 24 inches maximum. Where the reach depth exceeds 10 inches, the high side reach shall be 46 inches maximum for a reach depth of 24 inches maximum [coat hooks and shelves in

wooden cubbies are located above the 17" & 23 ¾" deep bench, coat hooks = 67 ½" high, shelves = 54" high]. Standards § 308.3.2.

49. Every accessible dressing room shall have a 24 inch by 48 inch bench fixed to the wall along the longer dimension [depth = 20 ¾" inches, width = 32 ½"]. Clear floor or ground space complying with 305 shall be provided and shall be

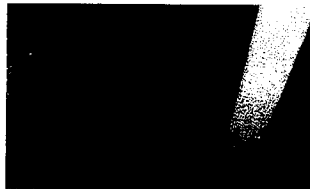
positioned at the end of the bench seat and parallel to the short axis of the bench [no clear floor space provided at the end of bench in wooden cubbies]. IAC § 400.320(c)(4); Standards § 903.2.



Referee Locker Room

50. The force required to open the interior door exceeds the maximum of 5 lbf [main door = 10 lbf]. IAC § 400.310(j)(10)(B)(ii); Standards § 404.2.9(1).

51. Maneuvering clearances shall extend the full width of the doorway and the required latch side or hinge side clearance [12" due to table]. IAC § 300.310(j)(5), Illustration B, Fig. 25(c); Standards § 404.2.4, Fig. 404.2.4.1(h).



52. Every accessible dressing room shall have a 24 inch by 48 inch bench fixed to the wall along the longer dimension [depth = 16 ½" inches]. Clear floor or ground space complying with 305 shall be provided and shall be positioned at the end of the bench seat and parallel to the short axis of the bench [no clear floor space provided at the end of bench]. IAC § 400.320(c)(4); Standards § 903.2.
53. Clear floor or ground space complying with Standards § 305 shall be provided and shall be positioned at the end of the bench seat and parallel to the short axis of the bench [clear floor space not provided at end of bench]. IAC § 400.320(c)(4); Standards § 903.2.

54. Where coat hooks or shelves are provided in individual compartments at least one of each type complying with Standards § 803.5 shall be provided in individual compartments in dressing, fitting, or locker rooms required to comply with Standards § 222.1 [no accessible locker is provided]. Standards § 222.2.



55. Where a clear floor or ground space allows a parallel approach to an element and the high side reach is over an obstruction, the height of the obstruction shall be 34 inches maximum and the depth of the obstruction shall be 24 inches maximum. Where the reach depth exceeds 10 inches, the high side reach shall be 46 inches maximum for a reach depth of 24 inches maximum [coat hooks and shelf is located above the 16 ½" deep bench, coat hooks = 61 ½" high, shelf = 66 ½" high]. Standards § 308.3.2.



56. Where bathtubs or showers are provided, at least one bathtub complying with 607 or at least one shower complying with 608 shall be provided [a shower meeting the requirements set forth in 608 is not provided]. Standards § 213.3.6.
57. Where a forward reach is unobstructed, the high forward reach shall be 48 inches maximum and the low forward reach shall be 15 inches minimum above the finish floor or ground [soap dispenser located in shower = 53½" high]. Standards §§ 308.2.1, Fig. 308.2.1.

VI. Toilet Rooms

Unisex Single User Toilet Room on Floor Level of Arena

58. The centerline of the water closet shall be 18 inches from the side wall [16"]. IAC §§ 400.310(n)(5)(B)(i), Illustration B, Fig. 28.
59. Clear floor or ground space complying with 305 shall be provided and shall be positioned at the end of the bench seat and parallel to the short axis of the bench

[no clear floor space provided at the end of bench].]. IAC § 400.320(c)(4); Standards § 903.2.

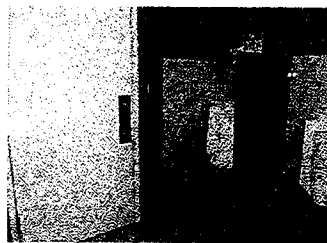
60. Where bathtubs or showers are provided, at least one bathtub complying with 607 or at least one shower complying with 608 shall be provided [a shower meeting the requirements set forth in 608 is not provided]. Standards § 213.3.6.

Women's Toilet Room in Bud Light Lounge

61. Where a tactile sign is provided at a door, the sign shall be located alongside the door at the latch side [women's toilet room sign is located on hinge side of door]. IAC § 400.310(u)(5); Standards § 703.4.2.
62. The force required to open the interior door exceeds the maximum of 5 lbf [women's doors = 12 lbf, 15 lbf]. IAC § 400.310(j)(10)(B)(ii); Standards § 404.2.9(1).
63. Toilet compartment doors shall not swing into the minimum required compartment area [door swings into compartment area of the ambulatory stall in the women's toilet room]. IAC § 400.310(n)(A)(i); Standards § 604.8.2.2.
64. Where a forward reach is unobstructed, the high forward reach shall be 48 inches maximum and the low forward reach shall be 15 inches minimum above the finish floor or ground [height of coat hook on stall door = 61"]. Standards §§ 308.2.1, Fig. 308.2.1.

Men's Toilet Room in Bud Light Lounge

65. The force required to open the interior door exceeds the maximum of 5 lbf [men's doors = 10 lbf, 10 lbf]. IAC § 400.310(j)(10)(B)(ii); Standards § 404.2.9(1).
66. Maneuvering clearances shall extend the full width of the doorway and the required latch side or hinge side clearance [13" to the urinal's partition wall]. IAC § 400.310(j)(5), Illustration B, Fig. 25(b); Standards § 404.2.4, Fig. 404.2.4.1(e).



67. A clear floor space 30 inch by 48 inch shall be provided in front of urinals to allow for a forward approach [men's toilet room door swings into the clear floor space of urinal]. IAC § 400.310(n)(6)(B); Standards § 605.3.
68. Where a forward reach is unobstructed, the high forward reach shall be 48 inches maximum and the low forward reach shall be 15 inches minimum above the finish floor or ground [height of coat hook on stall door = 57"]. Standards §§ 308.2.1, Fig. 308.2.1.

Family Toilet Room on Concourse Level

69. Where a tactile sign is provided at a door, the sign shall be located alongside the door at the latch side [sign is located on hinge side of door]. IAC § 400.310(u)(5); Standards § 703.4.2.

Women's Toilet Room on Concourse Level

70. Toilet compartment doors shall not swing into the minimum required compartment area [door swings into compartment area of the ambulatory stall in the women's toilet room]. IAC § 400.310(n)(A)(i); Standards § 604.8.2.2.

Men's Toilet Room on Concourse Level

71. A clear floor space 30 inch by 48 inch shall be provided in front of urinals to allow for a forward approach [stall door swings into the clear floor space of urinal]. IAC § 400.310(n)(6)(B); Standards § 605.3.
72. Where a forward reach is unobstructed, the high forward reach shall be 48 inches maximum and the low forward reach shall be 15 inches minimum above the finish floor or ground [height of coat hook on stall door = 61"]. Standards §§ 308.2.1, Fig. 308.2.1.
73. Where a forward reach is unobstructed, the high forward reach shall be 48 inches maximum and the low forward reach shall be 15 inches minimum above the finish floor or ground [height of soap dispenser = 49"]. Standards §§ 308.2.1, Fig. 308.2.1.