



**BLOOMINGTON PUBLIC LIBRARY  
LONG-RANGE VISION FOR THE FUTURE**

Presented to:  
Ms. Carol Koos, President  
Members, Board of Trustees  
Mr. Terry Lindberg, Interim Director

January 19, 2016



## **BLOOMINGTON PUBLIC LIBRARY LONG-RANGE VISION FOR THE FUTURE**

Prepared by:  
Farnsworth Group, Inc.  
2709 McGraw Dr.  
Bloomington, IL 61704

Contacts:  
Edward J. Barry, Jr., AIA  
Principal  
ebarry@f-w.com

Chad T. Frankeberger, Assoc. AIA  
Project Manager  
cfrankeberger@f-w.com

[www.f-w.com](http://www.f-w.com)

### **Table of Contents**

- 1.0 Executive Summary**
- 2.0 Introduction**
- 3.0 Current Mission Statement**
- 4.0 Current Vision Statement**
- 5.0 Historical Time Line**
- 6.0 Visioning Statement Methodology**
- 7.0 Vision for the Future**
- 8.0 Conclusion**
- 9.0 Acknowledgements**
- 10.0 Appendices**
  - 10.1 Appendix A – All-Public Input Session
  - 10.2 Appendix B – Senior Staff Input Session
  - 10.3 Appendix C – Board of Trustees Input Session
  - 10.4 Appendix D – Website Inputs
  - 10.5 Appendix E – Large Format Aerials and Photos
  - 10.6 Appendix F – Library Planning Associates Study

## 1.0 Executive Summary

*The goal of the Libraries Transform campaign is to change the perception that 'libraries are just quiet places to do research, find a book, and read' to a shared understanding of libraries as dynamic centers for learning in the digital age. Libraries of all kinds foster individual opportunity that ultimately drives the success of our communities and our nation.*

*Library Hotline • November 9, 2015*

Farnsworth Group has been engaged to provide the Bloomington Public Library with a holistic and comprehensive ensemble of preliminary planning and design services regarding their flagship facility located in Downtown Bloomington, Illinois. These services include:

- Existing Building Assessment.
- Long-Range Vision for the Future.
- Program of Building Spaces & Amenities.
- Conceptual Site Planning.
- Conceptual Building Design.

The Long-Range Vision Statement for the Future portion of the preliminary planning and design services for the Library is included herein, while the results of the other four (4) tasks are (or will be) included elsewhere. Upon completion of all these tasks and efforts, the Library will have in-place a solid roadmap to guide the future development, evolution, and expansion of their facility.

### Vision for the Future

Given all of the inputs and discussions described herein, the following seven-point vision statement for the future is offered for the Bloomington Public Library. This vision does not discard the current seven-point visioning statement for the Library, but rather uses it as a good and solid foundation, enhancing each of the seven (7) points with the thoughtful considerations recently collected from the General Public, the Library Staff, and the Board of Trustees. This vision will guide and direct the Library as it pursues the final three (3) steps in its current planning process. And, it will also serve as a longer-term guide, as the Library continues to evolve and remain as a vibrant and essential part of the Greater Bloomington Community.

### **Vision 1 • A Community Center**

The Bloomington Public Library is currently a strong, healthy, and prominent member of the Greater Bloomington Community. The Library shall continue to grow and evolve, and adroitly respond to the ever-changing needs of the Community, so as to remain strong, healthy, and prominent. The Library will strive to always be the primary public and civic gathering place for the Bloomington Community.

### **Vision 2 • Flexible Spaces & Gathering Places**

The Bloomington Public Library currently offers a balanced, comprehensive, and state-of-the-art mix of paper, digital, and electronic collections (including both traditional and cutting-edge). The Library shall continue to adjust that mix of collections, adding new formats and subtracting old formats as appropriate. The Library will strive to always be the primary public and universally accessible community resource for cultural, educational, and historical materials.

The Bloomington Public Library also currently offers an excellent variety and depth of services and programs, especially in light of the limited space available for the latter. The Library shall modify and expand their spatial mix (both inside and outside), in order to expand their services and programs to meet the evolving needs of the Greater Bloomington Community. Again, the Library will strive to always be the primary public and civic gathering place for a community.

### **Vision 3 • Staff & Patron Integration**

Through the friendly and knowledgeable staff, the Bloomington Public Library currently provides exceptional service to all of its citizens. The Library will strive to always be the primary source of subject-matter expertise for the Greater Bloomington Community.

### **Vision 4 • A Prominent Community Citizen**

The Bloomington Public Library and staff currently take an involved role in the Greater Bloomington Community by partnering with organizations to enrich the quality of Community life. This partnering role shall continue to be enhanced by on-going modification and expansion of the Library's mix of gathering and communal spaces, both inside and outside. The Library will strive to always be the primary public and civic gathering place for the Bloomington Community, and all of its stakeholders and stakeholder groups.

### **Vision 5 • High Technology & High Architecture**

The Bloomington Public Library currently offers a balanced, comprehensive, and state-of-the-art mix of paper, digital, and electronic collections (including both traditional and cutting-edge). The Library shall continue to adjust that mix of collections, adding new formats and subtracting old formats as appropriate.

Additionally, the Bloomington Public Library currently offers a functional, serviceable, and traditional library environment, with a neutral sense of civic space and civic place. The Library shall enhance this sense of civic space and place, through the introduction of inspirational architecture that will allow it to become and remain a Bloomington Community landmark and destination. The Library will strive to always be the singular dramatic and memorable landmark in the heart of the Bloomington Community's core area.

### **Vision 6 • A Downtown Cultural & Municipal Hub**

To meet our community's expectations, the Library embraces its responsibility to continue to thrive and grow. Mirroring the ongoing development of the Bloomington Community, the Library will continue to enhance its services, collections, and programs. The main library, located downtown, provides the full range of services and will be enhanced by its own enlargement, as well as the introduction of other appropriate access points (both physical and virtual). The Library will strive to always be an integral part of a larger civic ensemble.

### **Vision 7 • A Civic Destination**

The Bloomington Public Library provides a quiet space in a hectic world for interaction, communication, study, and reflection. The Library is a destination that cannot be visited often enough. The Library will strive to always be the community landmark and civic destination in Bloomington.

## 2.0 Introduction

Farnsworth Group has been engaged to provide the Bloomington Public Library with a holistic and comprehensive ensemble of preliminary planning and design services regarding their flagship facility located in Downtown Bloomington, Illinois. These services include:

A. Existing Building Assessment.

This assessment includes an architectural and engineering analysis of the existing Bloomington Public Library building and surrounding site. It examines existing conditions; layouts; and mechanical, electrical, plumbing, and fire protection systems. This assessment is complete; and a copy of same has been separately transmitted to the Library.

B. Long-Range Vision for the Future.

This visioning document guides the library in its on-going evolution and expansion, so that it will remain a vibrant and essential part of the Greater Bloomington Community. It also helps to decide what kinds of bricks-and-mortar changes will be most appropriate for that evolution. It includes three (3) input sessions for (1) the public-at-large; (2) the library staff; and (3) the Board of Trustees. The results of this visioning process are included herein.

C. Program of Building Spaces & Amenities.

This written Program of Building Spaces & Amenities narratively describes each room or space to be included in the modified and/or expanded library facility, and it also establishes those rooms' square foot sizes, other room adjacencies, and requirements for mechanical, electrical, plumbing, and technology systems. This program similarly describes desired additional site features including outdoor functional areas, parking lots, entrances and exits, ancillary structures, and other items. This Program of Spaces has yet to be completed.

D. Conceptual Site Planning.

This preliminary planning task includes several alternative site layouts that look at how best to enter and exit the site (for both pedestrians and vehicles); as well as how best to arrange the possible library modifications and/or expansions, the urban design and streetscape elements, the parking lot, and other site amenities. This Conceptual Site Planning exercise has yet to be completed.

E. Conceptual Building Design.

In tandem with the concept site planning task noted above, this preliminary design task includes several alternative concept building floor plans, based on the Program of

Building Spaces & Amenities. This Conceptual Building Design exercise has yet to be completed.

As noted above, the Long-Range Vision for the Future portion of the preliminary planning and design services for the Library is included herein, while the results of the other four (4) tasks are (or will be) included elsewhere. Upon completion of all these tasks and efforts, the Library will have in-place a solid roadmap to guide the future development, evolution, and expansion of their facility.

### 3.0 The Library's Current Mission Statement

As an important backdrop and prologue, the Bloomington Public Library's currently-adopted mission statement is noted below. This mission statement has been published and promulgated throughout the Library.

- *We provide our diverse community with a helpful and welcoming place that offers equal access to the world of ideas and information and supports lifelong learning.*



## 4.0 The Library's Current Vision Statement

Also as an important backdrop and prologue, the Bloomington Public Library's currently-adopted 7-point vision statement is noted below. This vision statement has also been published and promulgated throughout the Library.

- Bloomington Public Library is a vital community resource. The Library is passionate about what it is and what it does.
- The Library provides outstanding collections and the latest technologies in relaxed and inviting atmospheres. In addition, the Library offers relevant services and inspiring programs to meet diverse individual needs.
- Through the friendly and knowledgeable staff, the Library provides exceptional service to all of our citizens.
- The Library and staff take an involved role in the community by partnering with organizations to enrich the quality of community life.
- The Library uses technology to build upon traditional library and civic values to create an enduring sense of place.
- To meet our community's expectations, the Library embraces its responsibility to thrive and grow. Mirroring the exponential development of the community, the Library will expand its locations, services, collections, and programs. The main library, located downtown, provides the full range of services and will be enhanced by branches and other access points, both physical and virtual.
- The Bloomington Public Library provides a quiet space in a hectic world for interaction, communication, study, and reflection. The Library is a destination that cannot be visited often enough.



## 5.0 The Library's Historical Time Line

The final important backdrop and prologue for this Long-Range Vision for the Future is the Bloomington Public Library's Historical Time Line, listed below. This time line has also been published and promulgated throughout the Library.

- 1857** • The library opens to the public in a single room of a building on Center St. It was opened by the Ladies' Library Association, formed in 1856, and supported by book donations and membership fees handled by the Ladies' Library Association.
- 1867** • A charter is obtained from the legislature and the Association is incorporated under the name Bloomington Library Association.
- 1871** • The library relocates to a hall located at 105 West North Street, now West Monroe Street.
- 1880** • The library closes due to lack of funds. It reopens thanks to citizens who raise the needed \$1,100.
- 1887** • Mrs. Sarah B. Withers donates land at the corner of East and Washington streets for a library. A two-story building is erected and christened Withers Library. It is dedicated with speeches and a grand banquet.
- 1888** • Withers Library opens to the public in January.
- 1894** • The building and its possessions are turned over to the city. The library becomes a tax-supported institution, establishing a free public library.
- 1926** • Library on Wheels is created. The service brings books and magazines to patients at local hospitals.
- 1930** • Withers Public Library Bookwagon begins to deliver books to Bloomington neighborhoods and local schools.
- 1933** • The Lake Bloomington branch of the library, the Nellie E. Parham Branch, opens. This branch provides services for East Bay campers and residents of the lake area. The branch closes in 1974.
- 1960** • The library purchases a Bookmobile that has the capacity to hold more than 1,500 books. Driven by college students, the Bookmobile increases the number of stops to neighborhoods within the city.

- 1976** • Citizens for a New Public Library call a meeting to organize a Friends of the Library group. The group campaigns for voter approval of bonds for a new public library and succeeds.
- 1977** • A new library is built at 205 E. Olive St. It is named Bloomington Public Library.
- 1979** • The Extension Services (now Outreach) department is created to manage all services offered outside the library (Bookmobile, books-by-mail, and similar items).
- 1980s** • Bloomington Public Library receives an Illinois State Library's Project Plus Grant, making it possible to send the Bookmobile on stops to surrounding townships to demonstrate library service. As a result, a referendum is held and the townships of Arrowsmith, Bloomington, Dale, Dawson and Old Town form the Golden Prairie Public Library District, which is served by the Bloomington Public Library.
- 1995** • Kenneth Smith bequests \$298,083.26 to the library.
- 1996** • The Bloomington Public Library Foundation is established with funds bequeathed by Smith.
- 1997** • The first computer network, funded through the Foundation, is launched. This brings Bloomington Public Library up to speed in the booming technological age.
- 1998** • Sandra L. Beye bequests \$50,000 to the library. This bequest is used to expand the computer network.
- 2002** • A grant from the Bill and Melinda Gates Foundation allows public computer expansion.
- 2003** • The library receives an Illinois First Grant for the construction of the library's Computer Lab and expansion of the Information Technology Services department.
- 2006** • The library undergoes a major renovation to help improve accessibility and customer service. There are now lendable materials on both levels of the library.

## 6.0 Long-Range Visioning Statement Methodology

The Long-Range Visioning Statement process included the following four (4) events or activities:

1. An All-Public Input Session, where suggestions and ideas were gathered from all members of the Greater Bloomington Community. Over 150 invitations were distributed via USPS mail for this session, which was also publicized via the Library's website and social media sites. This session was held in the large ground-floor meeting room at the Library, on Thursday, 29 October 2015, from 6:00 to 9:00 PM. The following eight (8) questions were developed for this session, but were modified and consolidated, based on the dynamic discussions that occurred. See appendices for detailed results of this session.
  - What is the value of Bloomington Public Library to the community?
  - What are the best things about the Bloomington Public Library?
  - What are the worst things about the Bloomington Public Library?
  - What are the positive things about the Bloomington Public Library's building, site, and location?
  - What are the negative things about the Bloomington Public Library's building, site, and location?
  - What are the most important services that Bloomington Public Library should offer?
  - What additional services would you like to see Bloomington Public Library offer?
  - What is your future vision for the Bloomington Public Library?
2. A Senior Staff Input Session, where suggestions and ideas were gathered from the senior and/or departmental managers of the Bloomington Public Library (prior to this session, these managers had in turn received input from each of their staff reports). This session was held in the ground-floor Board meeting room at the Library, on Wednesday, 11 November 2015, from 8:30 to 11:30 AM. The following three (3) questions were developed for this session. See appendices for detailed results of this session.
  - How do you feel the patrons, the general public, the staff, and the Board of Trustees perceive the Bloomington Public Library?

- What are the best things and the worst things about the Bloomington Public Library; including its building, site, and location?
  - What is your future vision for public libraries in our society, and for the Bloomington Public Library in particular?
3. A Board of Trustees Input Session, where suggestions and ideas were gathered from the Board of Trustees of the Bloomington Public Library. This session was held at the Normal office of Farnsworth Group, on Wednesday, 11 November 2015, from 5:30 to 9:00 PM. The following three (3) questions were developed for this session. See appendices for detailed results of this session.
- How do you feel the patrons, the general public, the staff, and the Board of Trustees perceive the Bloomington Public Library?
  - What are the best things and the worst things about the Bloomington Public Library; including its building, site, and location?
  - What is your future vision for public libraries in our society, and for the Bloomington Public Library in particular?
4. General Public Input, utilizing the same kinds of questions described above, which were placed on the website of the Bloomington Public Library. See appendices for the responses to these questions received via the Web.

For each of the three (3) input sessions described above, the following procedures and protocols were utilized:

- Each question was asked of the audience individually, by a 3-member Farnsworth Group team.
- Answers were recorded by that same team, bullet-style, on large sheets on easels.
- Prior to proceeding to the next question, all participants were then asked to rank their top five (5) answers for the question at hand.
- At the conclusion of the question-and-answer period, the participants were separated into manageable small groups, and given large prints of both aerial and conventional photos of the Library. They were asked to use these images to graphically create their vision for the future of the Library. At the conclusion of this exercise, each small group gave a brief presentation to all in attendance.
- Discussion and interaction among participants was encouraged throughout both the question-and-answer and graphic design portions of the entire session.

Also of note, during the All-Public Input Session, Ms. Georgia Bouda, Director of the Bloomington Public Library, provided a statistical overview and organizational snapshot of the Library.

Finally, also of note during the All-Public Input Session, Mr. Mark Anderson of the Bloomington Area Career Center for School District 87 provided valuable assistance. His senior Pre-Engineering and Architecture students also participated in this session, as part of a year-long academic exercise.

## 7.0 Vision for the Future

Given all of the inputs and discussions described herein, the following vision statement for the future is offered for the Bloomington Public Library. This vision does not discard the current seven-point visioning statement for the Library, but rather uses it as a good and solid foundation, enhancing it with the thoughtful considerations recently collected from the General Public, the Library Staff, and the Board of Trustees. This vision will guide and direct the Library as it pursues the final three (3) steps in its current planning process. And, it will also serve as a longer-term guide, as the Library continues to evolve and remain as a vibrant and essential part of the Greater Bloomington Community.

### Vision 1 • A Community Center

**Current:** Bloomington Public Library is a vital community resource. The Library is passionate about what it is and what it does.

**Enhanced:** The Bloomington Public Library is currently a strong, healthy, and prominent member of the Greater Bloomington Community. The Library shall continue to grow and evolve, and adroitly respond to the ever-changing needs of the Community, so as to remain strong, healthy, and prominent.

**Implementation:** The Bloomington Public Library shall expand and enhance its existing flagship location, so as to become the focal point for a public-oriented Downtown Cultural and Municipal hub. This hub shall grow beyond the Library's current borders, and be powerfully linked to the remainder of Downtown Bloomington.

**Global:** The library as the primary public and civic gathering place for a community.

### Vision 2 • Flexible Spaces & Gathering Places

**Current:** The Library provides outstanding collections and the latest technologies in relaxed and inviting atmospheres. In addition, the Library offers relevant services and inspiring programs to meet diverse individual needs.

**Enhanced A:** The Bloomington Public Library currently offers a balanced, comprehensive, and state-of-the-art mix of paper, digital, and electronic collections (including both traditional and cutting-edge). The Library shall continue to adjust that mix of collections, adding new formats and subtracting old formats as appropriate.

**Enhanced B:** The Bloomington Public Library currently offers an excellent variety and depth of services and programs, especially in light of the limited space available for the latter. The Library shall modify and expand their spatial mix (both inside and outside), in order to expand their services and programs to meet the evolving needs of the Greater Bloomington Community.

**Implementation A:** The Bloomington Public Library shall enhance and modify its family of collection rooms and spaces, to allow for optimum future flexibility and reconfiguration options. Such flexibility will meet the needs of an ever-changing mix of collection media (paper, digital, and electronic), as well as allow for the introduction of new media yet to be created.

**Implementation B:** The Bloomington Public Library shall increase and enhance the number and type of gathering and programming spaces (both interior and exterior) available to its patrons and guests. Small, medium, and large Community events shall all be accommodated in these rooms and spaces.

**Global A:** The library as the primary public and universally accessible community resource for cultural, educational, and historical materials, in all formats.

**Global B:** The library as the primary public and civic gathering place for a community.

### **Vision 3 • Staff & Patron Integration**

**Current:** Through the friendly and knowledgeable staff, the Library provides exceptional service to all of our citizens.

**Enhanced:** Same as current.

**Implementation:** The administrative portion of the Library shall be housed in a high-functioning and supportive ensemble of rooms and spaces that optimize the staff experience, while strongly linking that staff to the public portion of the Library.

**Global:** The library as a source of subject-matter experts for all citizenry.

### **Vision 4 • A Prominent Community Citizen**

**Current:** The Library and staff take an involved role in the community by partnering with organizations to enrich the quality of community life.

**Enhanced:** The Bloomington Public Library and staff currently take an involved role in the Greater Bloomington Community by partnering with organizations to enrich the quality of Community life. This partnering role shall continue to be enhanced by on-going modification and expansion of the Library's mix of gathering and communal spaces, both inside and outside.

**Implementation:** The Bloomington Public Library shall increase and enhance the number and type of gathering and programming spaces (both interior and exterior) available to its patrons and guests. Small, medium, and large Community events shall all be accommodated in these rooms and spaces.



**Global:** The library as the primary public and civic gathering place for a community, and all of its stakeholders and stakeholder groups.

### Vision 5 • High Technology & High Architecture

**Current:** The Library uses technology to build upon traditional library and civic values to create an enduring sense of place.

**Enhanced A:** The Bloomington Public Library currently offers a balanced, comprehensive, and state-of-the-art mix of paper, digital, and electronic collections (including both traditional and cutting-edge). The Library shall continue to adjust that mix of collections, adding new formats and subtracting old formats as appropriate.

**Enhanced B:** The Bloomington Public Library currently offers a functional, serviceable, and traditional library environment, with a neutral sense of civic space and civic place. The Library shall enhance this sense of civic space and place, through the introduction of inspirational architecture that will allow it to become and remain a Bloomington Community landmark and destination.

**Implementation A:** The Bloomington Public Library shall enhance and modify its family of collection rooms and spaces, to allow for optimum future flexibility and reconfiguration options. Such flexibility will meet the needs of an ever-changing mix of collection media (paper, digital, and electronic), as well as allow for the introduction of new media yet to be created.

**Implementation B:** The Bloomington Public Library shall create a new dramatic and memorable front door for its flagship Downtown location. This new front door shall powerfully welcome both pedestrians and vehicles. Its drama and architectural prominence shall extend to the remainder of the Library; and shall strongly address the larger surrounding site as well.

**Global A:** The library as the primary public and universally accessible community resource for cultural, educational, and historical materials, in all formats.

**Global B:** The library as the dramatic and memorable landmark in the heart of a community's core.

### Vision 6 • A Downtown Cultural & Municipal Hub

**Current:** To meet our community's expectations, the Library embraces its responsibility to thrive and grow. Mirroring the exponential development of the community, the Library will expand its locations, services, collections, and programs. The main library, located downtown, provides the full range of services and will be enhanced by branches and other access points, both physical and virtual.

**Enhanced:** To meet our community's expectations, the Library embraces its responsibility to continue to thrive and grow. Mirroring the ongoing development of the Bloomington Community, the Library will continue to enhance its services, collections, and programs. The main library, located downtown, provides the full range of services and will be enhanced by its own enlargement, as well as the introduction of other appropriate access points (both physical and virtual).

**Implementation:** The Bloomington Public Library shall work with other public and private agencies to create a larger Downtown Cultural and Municipal hub or campus at its flagship location. This larger campus shall be bounded by East Grove Street on the North; Constitution Trail on the South; South Main Street on the West; and South Gridley Street on the East. Furthermore, this larger campus shall integrate itself with the remainder of Downtown Bloomington via strong pedestrian, bicycle, public transit, and automobile linkages.

**Global:** The library as an integral part of a larger civic ensemble.

### Vision 7 • A Civic Destination

**Current:** The Bloomington Public Library provides a quiet space in a hectic world for interaction, communication, study, and reflection. The Library is a destination that cannot be visited often enough.

**Enhanced:** Same as current.

**Implementation:** The Bloomington Public Library shall increase and enhance the number and type of gathering and programming spaces (both interior and exterior) available to its patrons and guests. Small, medium, and large Community events shall all be accommodated in these rooms and spaces. Furthermore, the Bloomington Public Library shall work with other public and private agencies to create a larger Downtown Cultural and Municipal hub or campus at its flagship location. This larger campus shall be a destination for the entire Community. It shall be bounded by East Grove Street on the North; Constitution Trail on the South; South Main Street on the West; and South Gridley Street on the East. And, this larger campus shall integrate itself with the remainder of Downtown Bloomington via strong pedestrian, bicycle, public transit, and automobile linkages.

**Global:** The library as a community landmark and civic destination.

## 8.0 Conclusion

*The goal of the Libraries Transform campaign is to change the perception that 'libraries are just quiet places to do research, find a book, and read' to a shared understanding of libraries as dynamic centers for learning in the digital age. Libraries of all kinds foster individual opportunity that ultimately drives the success of our communities and our nation.*

*Library Hotline • November 9, 2015*

Farnsworth Group has been engaged to provide the Bloomington Public Library with a holistic and comprehensive ensemble of preliminary planning and design services regarding their flagship facility located in Downtown Bloomington, Illinois. These services include:

- Existing Building Assessment.
- Long-Range Vision for the Future.
- Program of Building Spaces & Amenities.
- Conceptual Site Planning.
- Conceptual Building Design.

The Long-Range Vision Statement for the Future portion of the preliminary planning and design services for the Library has been included herein, while the results of the other four (4) tasks are (or will be) included elsewhere. Given all of the inputs and discussions that have been made as part of this visioning process, a seven-point vision statement for the future has been offered for the Bloomington Public Library that includes:

*Vision 1 • The Library as Bloomington's Primary Community Center*

*Vision 2 • A Library of Flexible Spaces and Ample Gathering Places*

*Vision 3 • A Library with Dynamic Staff and Patron Interaction*

*Vision 4 • The Library as Bloomington's Prominent Community Citizen*

*Vision 5 • A Library of High Technology and High Architecture*

*Vision 6 • The Library as Integral to a Downtown Cultural & Municipal Hub*

*Vision 7 • The Library as the Civic Destination in All of Bloomington*

This vision does not discard the current seven-point visioning statement for the Library, but rather uses it as a good and solid foundation, enhancing each of the original seven (7) points with the thoughtful considerations recently collected during the visioning process. This vision will guide and direct the Library as it pursues the final three (3) steps in its current planning effort. And, it will also serve as a longer-term guide, as the Library continues to evolve and remain as a vibrant and essential part of the Greater Bloomington Community.

## 9.0 Acknowledgements

Farnsworth Group would like to gratefully acknowledge the active participation in and support of the following important individuals during all of our activities for this Library Needs Assessment, Programming, Site Analysis, & Concept Design project. Everyone's ideas, input, energy, and enthusiasm have been invaluable.

### Bloomington Public Library

Board of Trustees

Carol Koos, President  
Van Miller, Vice President  
Emily Kelahan, Secretary  
Susan O'Rourke, Treasurer  
Alex Cardona  
Mike Raikes  
Julian Westerhout  
Robert W. Porter  
Whitney Thomas

Terry Lindberg, Interim Director  
Georgia Bouda, Retired Director

### Golden Prairie Public Library District

Board of Trustees

Lynn Gray President  
Carolyn Dail, Vice-President  
Stephen Peterson, Secretary/Treasurer  
Carol Carey-Odekirk  
Patti Salch  
Tim Ervin  
Jodi Sherman

Terry Lindberg, Interim Director  
Georgia Bouda, Retired Director

## 10.0 Appendices

### 10.1 Appendix A – All-Public Input Session

#### Attendees

Patricia Salch  
Alex Cardona  
Y. Margot Mendez  
Mark Anderson  
Russel Francois  
Conner Boolman  
Joni Painter  
Jim Fruin  
John Meek  
Sarah Grammer  
Pamela Eaton  
Alicia Henry  
Carsen Hilt  
Michael Reid  
Katie Novak  
Mike Raikes  
Carol Koos  
Debbie Lubbert

#### Question 1: What is the value of Bloomington Public Library to the community?

- 12 Gathering place for entire Bloomington Community.
  - 11 Essential in developing human capital, including through early literacy.
  - 10 Technological access to all, young and old.
  - 10 Public educational resource open to all.
  - 7 Easy access from trail, auto, bus, and/or online.
  - 6 Regardless of age, race, or other criteria, Library has something for everyone.
  - 6 Key civic destination, whether open or closed.
  - 4 Library measures Bloomington Community's commitment to education and intellectual pursuits.
  - 4 Library opens the door to the entire Bloomington Community.
  - 3 Expansive and broad-based services to public (not just library building).
  - 3 Library is chronicler of history through archival materials.
  - 1 Library is supportive of schools, day care, and care providers.
  - 1 Home delivery to those who are eligible.
  - 1 Provides venue for artwork.
  - 0 Offers free entertainment.
- 79 *Total votes*

**Question 2: What are the best things about the Bloomington Public Library?**

- 10 Central location.
  - 9 Excellent collections that serve patrons well.
  - 9 Excellent digital media collection.
  - 7 Good community gathering spaces.
  - 5 Well-educated staff.
  - 5 See question number one answers.
  - 4 Good level of safety and security.
  - 4 Accommodating staff to serve patron needs.
  - 4 Excellent library programs, including book clubs.
  - 3 Outdoor patio renovations.
  - 2 Excellent board and staff.
  - 2 Electronic materials renewal.
  - 1 Convenient and accessible parking facilities.
  - 1 Need to build upon current success of Library.
  - 0 Free parking.
  - 0 Ample accessible parking.
  - 0 Good small meeting rooms.
  - 0 Quiet desk work spaces.
  - 0 Efficient self-check stations.
  - 0 Drop-off locations, both inside and outside.
  - 0 Private work and study environments.
  - 0 Attractive coffee and refreshment area.
  - 0 Well-covered parking area for both autos and bicycles.
  - 0 Live music programs.
  - 0 Good directional signage.
  - 0 Small book shop.
  - 0 Excellent resource for small and new businesses.
  - 0 Efficient operation and organization.
  - 0 Enjoyable exterior seasonal décor.
- 66 *Total votes*

**Question 3: What are the worst things about the Bloomington Public Library?**

- 11 City budget issues and other civic investments present challenge for Library.
- 9 Not enough meeting rooms and spaces.
- 7 Very weak connection to and from Downtown Bloomington.
- 7 Difficult and unpleasant access for pedestrians.
- 6 Not enough parking.
- 5 Library does not connect with high school students.
- 5 Building facades lack clear purpose, and are very “tomb-like”.

- 5 Old north front door does not connect to Downtown Bloomington.
- 5 Not enough green spaces.
- 4 Patios are under-utilized and under-programmed.
- 4 Inadequate bicycle access and way finding signage.
- 4 Unsafe for pedestrians and bicyclists.
- 3 No display cases for community displays and exhibits.
- 2 Lack space for Library's strong art collection.
- 2 Library needs improved architectural appearance.
- 2 Inadequate electrical outlets, and quiet desks.
- 1 Inadequate bicycle racks.
- 1 Parking arrangements are confusing.
- 1 City way finding signage system is poor to library and other civic buildings.
- 1 No book store and/or book sales.
- 0 No exterior water features.
- 0 No Auditorium.
- 0 Cannot really see in or out of building (lack of good transparency).
- 0 Lacks large trees.
- 0 No maker spaces.
- 0 Not enough small spaces for tutoring and other small group activities.
- 0 Book drop-off is too high for normal cars.

85 *Total votes*

**Question 4: What is your future vision for the Bloomington Public Library?**

- 13 Keep Library in Downtown Bloomington, near current location.
- 12 Expand both building and parking.
- 11 Create "new vibe" environment that is being continuously updated.
- 8 Prominent social gathering place for all Community organizations.
- 7 Local author fairs and similar events.
- 7 Part of a bigger holistic and mixed-use campus.
- 4 Create total multifaceted "polyvalent" Community campus.
- 4 Integrate Bloomington and Normal into greater Community Library system.
- 4 Expanded hours of operation, and create 24/7/365 setting.
- 3 Library as an incredible and special experience.
- 2 Maximize use of advertising and social media for organizational promotion.
- 0 Maximize flexibility of both the facilities and the organization.
- 0 Always expanding collections.

75 *Total votes*



## 10.2 Appendix B – Senior Staff Input Session

### Attendees

Carol Torrens  
Laura Golaszewski  
Kathy Jeakins  
Rhonda Massie  
Jon Whited  
Melissa Wiltrip  
Allison Schmid  
Georgia Bouda  
Caprice Prochnow  
(Absent) Gayle Tucker

### Question 1: How do you feel the patrons, the general public, the staff, and the Board of Trustees perceive the Bloomington Public Library?

- 6 Low priority for some Community members to make substantial enhancements to Library due to other fiscal concerns (books vs potholes).
- 5 Currently disconnected from Downtown Bloomington.
- 4 Quasi militaristic (severe) entryway.
- 3 Limited walkability between Library and Downtown Bloomington places.
- 3 Need additional “Attractor Features”.
- 3 Library is not (architecturally) inviting; feel is cold and unfriendly.
- 2 Off the beaten path (inconvenient location) for many.
- 2 Excellent customer service by staff.
- 2 Library is too busy and hectic, with no quiet spaces.
- 2 Library is an invaluable Community resource.
- 1 Possible morale problem at Library, with staff doing more with less, and perhaps comparing unfavorably with Normal.
- 1 Don’t think of Library as a meeting place (trumped by coffee shops and other civic places).
- 1 Library is an accessible community resource.
- 0 Too many homeless Library visitors.
- 0 Not well-established traffic pattern from neighborhoods to Library.
- 0 Wide spectrum of interest in Library (those that really care - far greater; and those who are ambivalent - far less)
- 0 IWU/ISU students not aware of Library as powerful resource.
- 0 Good resource for home-schooled children (a Crunchy place).
- 0 Library is not very appealing to teen audience.
- 0 Perhaps problematic media perception of Library.
- 0 Bloomington vs Normal issue, in terms of who can enhance their library first.
- 0 Libraries are outdated in a tech-savvy culture.
- 0 Non-commercialized, free, and neutral gathering place, with many things available.

0 Library management is not visible to and accessible for the citizenry.

35 *Total votes*

**Question 2: What are the best things and the worst things about the Bloomington Public Library; including its building, site, and location?**

**Best Things**

- 6 Staff.
- 4 High and efficient adoption rate of new technology.
- 4 Library is under 15 minutes from anywhere.
- 4 Accessible to the Mission, police station, and social service organizations
- 3 Current magazine and DVD collections.
- 2 Staff makes efficient use of limited space.
- 2 Circulation second to none.
- 2 Library is very accessible by bus, bike, and walking.
- 2 Offers warming center for the homeless.
- 2 Proximity to Constitution Trail.
- 1 Communication and media outreach efforts.
- 1 Ratio of circulation to service cost is excellent.
- 1 Large, separate children's section that is very appealing, both physically and programmatically.
- 0 Excellent art collection.
- 0 Library provides "indirect" social and supportive services.
- 0 Library is integral to multiple public properties that could be brought into mixed use vision.

34 *Total votes*

**Worst Things**

- 7 Library has bad traffic flow, and too few parking spaces.
- 6 Pedestrian and automobile conflicts abound at Library.
- 5 Library has ugly façade, with Soviet Era influences (drab with dark windows).
- 3 Need more public (large) and private (small) meeting spaces, which are optimally flexible.
- 3 Little connection (geographical and/or psychological) between Library and Downtown Bloomington.
- 3 Not a lot of flexibility in terms of room and space layout.
- 2 No café for coffee, snacks, and similar items.
- 2 Entrance is not inviting and hard to pinpoint in facade.
- 2 Front door/back door design oddity (original vs renovated design).
- 1 Library looks severe and dirty.

- 1 Library serves as warming center for homeless.
- 1 Fundamental lack of mixed uses at the Library.
- 0 Parking lot layout and number of spaces.
- 0 Inadequate office and administrative spaces.
- 0 Inadequate number of bicycle racks.
- 0 Library feels smaller than it really is.
- 0 Not a lot of privacy for small-group and individual activities.
- 0 Parking lot is unsafe.
- 0 Building feels upside down and backwards.
- 0 Little or no art display space.
- 0 Need to get the word out to the Community about collections.
- 0 Bathrooms are in high traffic areas.
- 0 Too much going on (chaos) at immediate main entry; need inviting and relaxing entry sequence.
- 0 Community room is woefully inadequate, from several perspectives.
- 0 "Grotto" overhang (covered parking) is unappealing and foreboding. It is dirty/dingy; and is used as a toilet.
- 0 No 3D printer rooms or spaces.
- 0 No conducive rooms or spaces for needed programs.

35 *Total votes*

**Question 3: What is your future vision for public libraries in our society, and for the Bloomington Public Library in particular?**

- 7 Strong, vibrant, and dynamic outdoor spaces (such as a village green, amphitheater, farmer's market, and good traffic calming, too).
- 5 Echo rich architectural history of Bloomington Community.
- 4 Collaborate with other institutions and cultural resources.
- 4 Flexible and evolutionary spaces.
- 3 Incubator for start-ups.
- 3 Add auditorium.
- 2 Facilitate extended network of experts (and expand knowledge base).
- 1 Language learning resources laboratory.
- 1 Continue both electronic and paper formats (to appeal to all ages).
- 1 Space for exhibits, to showcase local and rotate with other facilities.
- 1 Continue to be technologically relevant.
- 1 The Library as a vital activity hub.
- 1 Team with other entities.
- 1 Relocate and enhance the children's section.
- 0 Indoor amphitheater.
- 0 More private and crowd funding for the Library.
- 0 Avoid random and haphazard planning.
- 0 Consider revenue generation via weddings and corporate events.

- 0 Start a Story Corps type of program and area.
- 0 Expanded media center.
- 0 Maker spaces
- 0 Always pursue out-of-the-box thinking.
- 0 Provide old-fashioned nook-type spaces.
- 0 Enhance personal connections, including with citizens of similar interests.
- 0 Test kitchen with garden (with edibles products).
- 0 Adequate spaces for both small and large groups.
- 0 24/7/365 facility to maximum usage and Bloomington Community impact.
- 0 Always assure plenty of parking.

35 *Total votes*

### 10.3 Appendix C – Board of Trustees Input Session

#### Attendees

Carol Koos, President  
Van Miller, Vice President  
Emily Kelahan, Secretary  
Susan O'Rourke, Treasurer  
Alex Cardona  
Julian Westerhout  
Robert W. Porter  
Georgia Bouda, Director

#### Question 1: How do you feel the patrons, the general public, the staff, and the Board of Trustees perceive the Bloomington Public Library?

- 7 Library should serve everyone.
- 5 Non-Library users perceive Library upgrades are not priority.
- 5 Library staff schedules are maximized, without additional available growth.
- 4 Location is unsafe, both area and facility.
- 4 Negative issues with homeless and substance-abuse populations (nearby shelters).
- 3 Library offers excellent customer service.
- 3 Facility is crowded.
- 3 Nothing wrong with the Library, as-is, from those who don't use it.
- 2 35-37% Library cardholders in Bloomington Community.
- 2 Outreach staff is inadequate.
- 2 No Library staff has been added in 5+ years.
- 2 Library is very forward-thinking, in terms of classes, unique resources, and similar items.
- 1 West side vs East Side issue remains.
- 1 Need to be a stand-out attraction to increase current 35-37% cardholder population.
- 1 Not the best location for Downtown Bloomington.
- 0 Solid written mission statement of the Library.
- 0 Library serves everyone.
- 0 Board of Trustees is strong influence on organization.
- 0 Active users truly love the Library.
- 0 Majority of staff truly enjoy working at the Library.
- 0 Library has abundant resources.
- 0 Library considers itself a "world class" operation, compared to its peers.
- 0 Bloomington Community wants the Library to save Downtown.
- 0 Strong community interest in outreach programs.
- 0 Current urban perception for Library is not necessary.
- 0 Library should have Chicago "suburban" feel instead.
- 0 Some perceive "political" issues at the Library.
- 0 Administrative offices for Library are inadequate (small, limited windows, disconnected).
- 0 Existing hill topography is problem (limiting windows and other amenities).

- 0 Staff needs bigger sorter space.
- 0 Library needs more computer space
- 0 Facility needs separate entrances for “after-hour” meeting rooms.
- 0 Constitution Trail near Library is of questionable value.
- 0 Library offers momentum for Downtown Bloomington redevelopment.
- 0 Library needs more park-like setting and connections to trails and the community.
- 0 Library needs to be something extraordinary.
- 0 Library serves white collar community.
- 0 Library needs to serve underprivileged and the East Side (large tax base there).
- 0 No expectation of commercial activities at Library.
- 0 Awareness of 1.5 million items per year checked out at Library.

45 *Total votes*

**Question 2: What are the best things and the worst things about the Bloomington Public Library; including its building, site, and location?**

**Best Things**

- 9 Staff and customer service development • Part-time staff want to become full-time • Minimal staff turnover.
- 7 Cutting-edge technology and collections.
- 6 Solid security.
- 4 Very well-attended programs.
- 3 Free Wi-Fi.
- 3 Popular and diverse collections.
- 3 Book mobile is an excellent asset.
- 2 Nice and flexible patio space.
- 2 Free parking
- 2 One facility entrance.
- 1 Accessible public transit.
- 1 Excellent librarian appointments.
- 1 General gathering space for the Community.
- 0 Safe location adjacent to police station.
- 0 Main parking lot is nicely lit.
- 0 Signage and graphics are well-designed.
- 0 Walkable access for facility.
- 0 Garage space.
- 0 Clean facility.
- 0 Generally attractive building.
- 0 Separate service desk.
- 0 Digital media lab.
- 0 Teen space and programs.
- 0 Secure staffing and administrative area.

- 0 Book shop space.
- 0 Covered parking area.
- 0 Inter-library loan program.
- 0 Micro film archives offering history component.

44 *Total votes*

### **Worst Things**

- 7 Lack of adequate parking.
- 6 Lack of adequate storage space.
- 4 Need two computer labs (both collaborative and personal labs).
- 4 Library location is bad (not visible, back turned to Downtown, poor way finding, not centrally located)
- 4 Need more staff.
- 3 Surrounding property uses are undesirable (waste transfer site, public works storage, and similar items), and do not compliment Library.
- 3 Need larger, more open teen spaces with glass walls.
- 2 Bad book drop location.
- 2 Need better server room.
- 1 Need more (bona fide) maker spaces.
- 1 Bad traffic flow in parking lot.
- 1 Lack of display space for Library and public use.
- 1 Lack of space for preschoolers.
- 1 Bottom parking lot poorly lit.
- 1 Sunday opening hours (1 to 5 PM) are too short.
- 1 Friday and Saturday opening hours (9 AM to 5 PM) are also too short.
- 1 Solid tile flooring in certain rooms doesn't allow flexibility.
- 1 Lack of small study rooms.
- 1 Lack of auditorium.
- 1 Community room is drab and uninviting.
- 0 Some people would prefer a north entrance (as originally designed).
- 0 Need space for computer classes that could transform into maker spaces.
- 0 Lack of a service window.
- 0 Bike rack in obscure location, and is not covered and monitored.
- 0 Fireplace is inefficient.
- 0 Need larger printing space.
- 0 Lack of adequate archival storage with a properly-controlled environment.
- 0 Outside appearance still needs improvements.
- 0 No clear public/private divide between some staff spaces.
- 0 Accessibility for disabled is lacking in certain areas.
- 0 Need more opportunity for staff advancement.
- 0 No restaurants near the Library.
- 0 No green space on the south (parking) side of the Library.

- 0 People come to library, conduct their business, and leave (don't linger because no other uses).
- 0 Lack of flexibility in the electrical system.
- 0 No backup generator.
- 0 No (bona fide) storm shelter.
- 0 No up-to-date-written Library vision statement.

46 *Total votes*

**Question 3: What is your future vision for public libraries in our society, and for the Bloomington Public Library in particular?**

**Vision for Bloomington Public Library**

- 7 Will always be a powerful public meeting space.
- 7 Will offer free lifelong learning.
- 1 Needs to be a powerful and dynamic destination.
- 1 Strong collaboration with other local groups and activities.
- 1 More virtual content and presentation.
- 0 Digital formats will continue to grow.
- 0 Powerful integration of all other cultural arts.
- 0 A different format than before, but the same message.

**Vision for Libraries in Society**

- 5 The importance of three places in society (home, work, and civic places – libraries).
- 5 Need for strong, diverse mix of uses and functions (daycare, retail, work force development, residential, arts, and meet spaces – and other uses that draw people to the Library).
- 4 Going digital.
- 1 Influence of retiring boomer generation.
- 0 Print books and other materials will still be with us.
- 0 DVDs and magazines will be going away.

32 *Total votes*



## 10.4 Appendix D – Website Inputs

Seven responses were received to the ensemble of questions placed on the Bloomington Public Library website, during the same time period when the three (3) input sessions were conducted. Those responses are included below.

## Survey Question Details Response 1

**Survey ID Number:** 17

**Submit Date:** November 21, 2015 • 7:13 AM

**Question 1: What is the value of Bloomington Public Library to the community?**

Very important.

**Question 2: What are the best things about the Bloomington Public Library?**

I like online services, self checkout, outside and inside check-in.

**Question 3: What are the worst things about the Bloomington Public Library?**

Hours not long enough. One location in town.

**Question 4: What are the positive things about the Bloomington Public Library's building, site, and location?**

Library not cramped, self check, pleasant staff who helps.

**Question 5: What are the negative things about the Bloomington Public Library's building, site, and location?**

Library is small, locked CD cases, location hard to get to, outside building not appealing, drab, limited books on CD.

**Question 6: What are the most important services that Bloomington Public Library should offer?**

Available electronic books, self-services.

**Question 7: What additional services would you like to see Bloomington Public Library offer?**

Longer hours, location on east or north east side of town, services outside hours such as hold pick up, have holds already checked out and then check in automatically after a week if not picked up.

**Question 8: What is your future vision for the Bloomington Public Library?**

Greater eBooks and audio book availability online and inside.

## **Survey Question Details Response 2**

**Survey ID Number:** 15

**Submit Date:** November 15, 2015 • 7:19 PM

### **Question 1: What is the value of Bloomington Public Library to the community?**

It is a place that has access for everyone regardless of race, religion, economic stature, etc. The library offers the chance to read for free. The library offers many types of music-there is something for everyone's preference.

### **Question 2: What are the best things about the Bloomington Public Library?**

I can access the library online. I can put books on hold and pick them up easily. The librarians are very knowledgeable. The employees are friendly. I can pay fines online.

### **Question 3: What are the worst things about the Bloomington Public Library?**

I cannot bring my purse into the library because I get panhandled when I do. I often have difficulty finding the books I'm looking for.

### **Question 4: What are the positive things about the Bloomington Public Library's building, site, and location?**

The building is well cared for. The parking lot has adequate parking

### **Question 5: What are the negative things about the Bloomington Public Library's building, site, and location?**

It isn't close to any other businesses or stores. I'd like to have everything on one level.

### **Question 6: What are the most important services that Bloomington Public Library should offer?**

Access to even more books!

### **Question 7: What additional services would you like to see Bloomington Public Library offer?**

Notary public services; "how to" classes for adults-such as Microsoft Excel.

### **Question 8: What is your future vision for the Bloomington Public Library?**

An enlarged building with longer hours. Adult classes.

## Survey Question Details Response 3

**Survey ID Number:** 14

**Submit Date:** November 4, 2015 • 12:51 PM

### **Question 1: What is the value of Bloomington Public Library to the community?**

It is extremely valuable. It really empowers the community with knowledge from books and the internet. Also, it gives patrons a way to put their life back in order, with the use of the internet to look for jobs. The library is so much more; the library gives to the community; the amount seems endless.

### **Question 2: What are the best things about the Bloomington Public Library?**

Some of the best things about the library is: 1. It's a very resourceful place to obtain information. 2. It's a very educational place to learn about history, rather it's about a specific person, or State. 3. There are a lot of friendly faces here at the library that are eager to help you when you need it. 4. The library resources can be very helpful in educating toddlers. This is just to name a few, I am sure there is so much more.

### **Question 3: What are the worst things about the Bloomington Public Library?**

The worst thing about the library is the area where it is built. We have way too many bad patrons that come to the library for the wrong reasons. This is very much due to the type of neighborhood that surrounds the library.

### **Question 4: What are the positive things about the Bloomington Public Library's building, site, and location?**

The positive about the building is, it's built very well to accommodate all walks of people, rather handicapped, blind, or overweight. Everything is pretty much lightening up in a sense with how the inside of the library is designed. It's easy to find your way around and get to a location you wanting to reach. The site is nicely put together. Parking for the patrons seems to go pretty well. With the marking on the ground to direct patrons on how to get around in and out of the parking lot has proven to a good idea. At night with all the lights are very helpful when dealing with a full house of patrons trying to get in and out of the parking lot. The library is built in a very low grade area, but the positive is, that the library can help rehabilitate some of the patrons that have lost their way due to bad decisions.

### **Question 5: What are the negative things about the Bloomington Public Library's building, site, and location?**

The location is not the best, considering the neighborhoods. The building is too small. Considering how large the turnout for special events, the library sometimes can be challenged for space to house them all. The site could use more room for staff parking, other than that, it's fine.

**Question 6: What are the most important services that Bloomington Public Library should offer?**

Personally from what I see in some of the patrons that come here, I would think some tutoring would be very helpful. I came across some patron that couldn't read, or write well enough to enter information to create a resume. So, some form of teaching would be a nice to have.

**Question 7: What additional services would you like to see Bloomington Public Library offer?**

Additional service - that is a hard one. The library is already putting out so much as far as services goes. There is such a variety out there that would be a great to have. Okay, one that interest me, is having a service that teaches a patron how to prepare for a job interview.

**Question 8: What is your future vision for the Bloomington Public Library?**

I think the library will eventually expand more to accommodate the ever growing community of people. When I say this, I am thinking about the variety of programs.

## **Survey Question Details Response 4**

**Survey ID Number 56**

**Submit Date:** December 12, 2015 • 7:34 AM

### **Question 1: What is the value of Bloomington Public Library to the community?**

100 % value. Books for kids, genealogy, newspapers, computers etc. Some of these services are enjoyed by people who would otherwise not be able to because they don't have a computers or don't have the money to buy a book.

### **Question 2: What are the best things about the Bloomington Public Library?**

For me it's the newspaper on microfilm and city directories.

### **Question 3: What are the worst things about the Bloomington Public Library?**

Sometimes I can't find a place to park anywhere near the library. That's usually when you have an event going on i.e. kids reading hour etc.

### **Question 4: What are the positive things about the Bloomington Public Library's building, site, and location?**

You're centrally located, although someone who lives out by the airport probably wouldn't think so. It's close for the less fortunate who can walk to the library or take the bus. I like the online resources (newspapers) and that you are able to access them from home that is really nice. The librarians are all so helpful anytime you can't find something. Whether it take one minute or fifteen they are really nice.

### **Question 5: What are the negative things about the Bloomington Public Library's building, site, and location?**

You have family history (Genealogy) listed under books. What does family history have to do with books? A library employee pointed that out to me recently, I could've been using that for the past couple of years. Genealogy should have its own tab (it's a hobby), you have plenty of room to create one.

### **Question 6: What are the most important services that Bloomington Public Library should offer?**

I don't know.

### **Question 7: What additional services would you like to see Bloomington Public Library offer?**

More genealogy resources (databases) but I know that would probably be expensive.

### **Question 8: What is your future vision for the Bloomington Public Library?**

I don't know.

## **Survey Question Details Response 5**

**Survey ID Number:** 57

**Submit Date:** December 30, 2015 • 8:37 PM

**Question 1: What is the value of Bloomington Public Library to the community?**

Extremely important.

**Question 2: What are the best things about the Bloomington Public Library?**

Large variety of books & DVDs.

**Question 3: What are the worst things about the Bloomington Public Library?**

That there is only one location. Large cities usually have branch Libraries which serve the whole city not just one area. If you had a branch on the East Side of the city, it would encourage kids and adults to take more advantage of our Library system. I would sure be there more.

**Question 4: What are the positive things about the Bloomington Public Library's building, site, and location?**

I can't think of any, sorry.

**Question 5: What are the negative things about the Bloomington Public Library's building, site, and location?**

The location, because of where you are I will not go there at night. I don't feel safe. I am disabled & with no entrance to the 1st floor I can no longer come to the Library. When I was able to come there were several times the elevator was stuck, so I won't use that.

**Question 6: What are the most important services that Bloomington Public Library should offer?**

Bookmobile, without it I would have no way of reading the books & watching the DVDs.

**Question 7: What additional services would you like to see Bloomington Public Library offer?**

**Question 8: What is your future vision for the Bloomington Public Library?**

To have a couple branches.

## Survey Question Details Response 6

Survey ID Number 58

Submit Date: January 3, 2015 • 1:25 AM

### Question 1: What is the value of Bloomington Public Library to the community?

Our family highly values this library. The awesome activities, the great selections of reads, and an exciting children's area had been influential in exciting my daughter around reading and learning. We have been coming to the library for years and she still gets excited every time I let her know we're going. Also, the ability to utilize the Bookmobile has been amazing. Being able to place items on hold, receiving text reminders about the bookmobile, and then being able to pick them up with ease (the bookmobile comes on our street) is of absolute value to me and my daughter. Additionally, I have also utilize several books from the computer section to teach myself skills with Microsoft products (Excel, Access, and VBA). This has greatly increased my value at work.

### Question 2: What are the best things about the Bloomington Public Library?

- Great selection of books and other media - Very easy to access information via web, mobile app, and text notifications - The Children's section and staff are absolutely wonderful - The community activities and courses are incredibly beneficial - The Bookmobile!! - Urban Fiction section. It really means a lot to me that you have an urban fiction section. I have repeatedly asked Normal Public Library create one to no avail.

### Question 3: What are the worst things about the Bloomington Public Library?

No comparative patterns in reading program that Normal Public Library offers (that I am aware of).

### Question 4: What are the positive things about the Bloomington Public Library's building, site, and location?

No response.

### Question 5: What are the negative things about the Bloomington Public Library's building, site, and location?

No response.

### Question 6: What are the most important services that Bloomington Public Library should offer?

No response.

### Question 7: What additional services would you like to see Bloomington Public Library offer?

No response.



**Question 8: What is your future vision for the Bloomington Public Library?**

No response.

## **Survey Question Details Response 7**

**Survey ID Number:** 59

**Submit Date:** January 3, 2015 • 11:33 AM

**Question 1: What is the value of Bloomington Public Library to the community?**

Huge.

**Question 2: What are the best things about the Bloomington Public Library?**

Employees, and wide array of books and programs.

**Question 3: What are the worst things about the Bloomington Public Library?**

Space constrain.

**Question 4: What are the positive things about the Bloomington Public Library's building, site, and location?**

Site.

**Question 5: What are the negative things about the Bloomington Public Library's building, site, and location?**

Space location.

**Question 6: What are the most important services that Bloomington Public Library should offer?**

Wide array of books.

**Question 7: What additional services would you like to see Bloomington Public Library offer?**

More interactive programs on weekends instead of weekdays. This help working parents to participate and more involvement.

**Question 8: What is your future vision for the Bloomington Public Library?**

No response.

## 10.5 Appendix E – Large Format Aerials and Photos

The following large-format aerials and photos of the existing Bloomington Public Library site and building were utilized during all three input sessions:

- Sheet 1 • Aerial Photo of Immediate Library Site.
- Sheet 2 • Aerial Photo of Surrounding Environs of Library Site.
- Sheet 3 • Photos of the Four Principal Library Building Facades.

E. OLIVE STREET

LIBRARY

S. EAST STREET

S. PRAIRIE STREET

E. JACKSON STREET

# LIBRARY EXPANSION INPUT SESSION

AERIAL OF LIBRARY SITE  
BLOOMINGTON, IL | 29 OCTOBER 2015

BLOOMINGTON PUBLIC LIBRARY

 **Farnsworth**  
GROUP

This information is copyrighted by Farnsworth Group. All rights reserved.



# LIBRARY EXPANSION INPUT SESSION

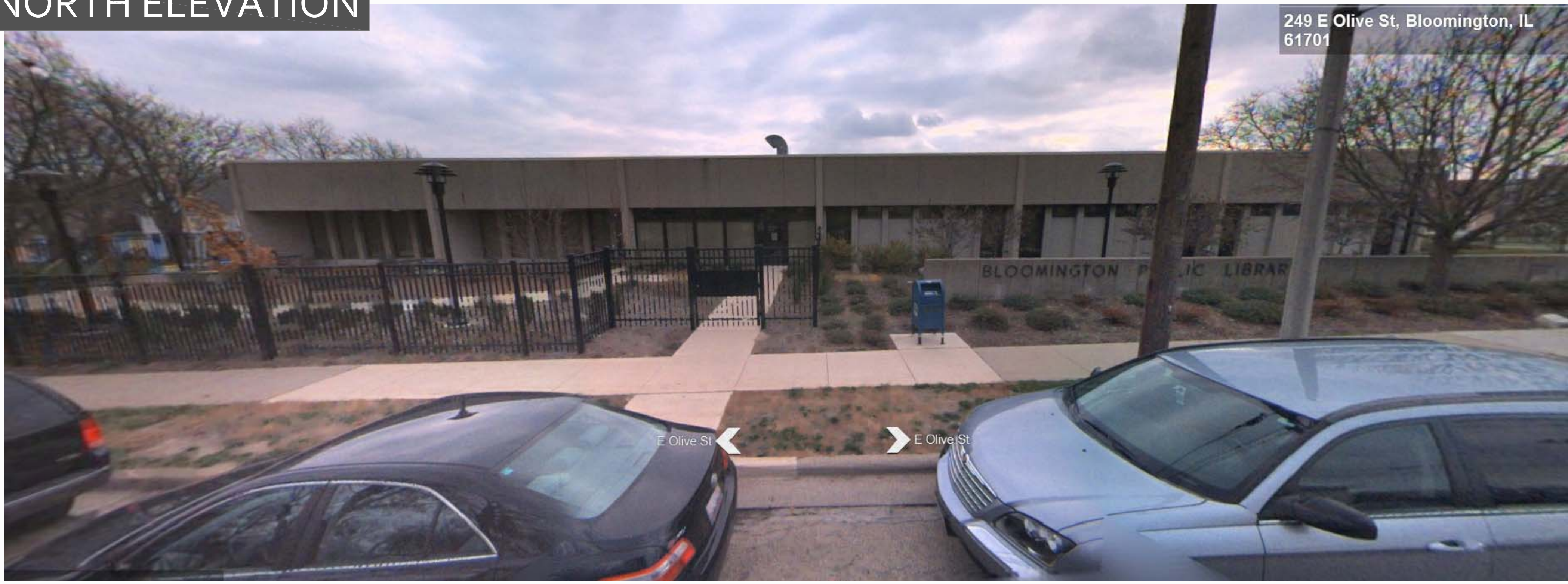
AERIAL OF NEIGHBORHOOD  
BLOOMINGTON, IL | 29 OCTOBER 2015

BLOOMINGTON PUBLIC LIBRARY

 **Farnsworth**  
GROUP

This information is copyrighted by Farnsworth Group. All rights reserved.

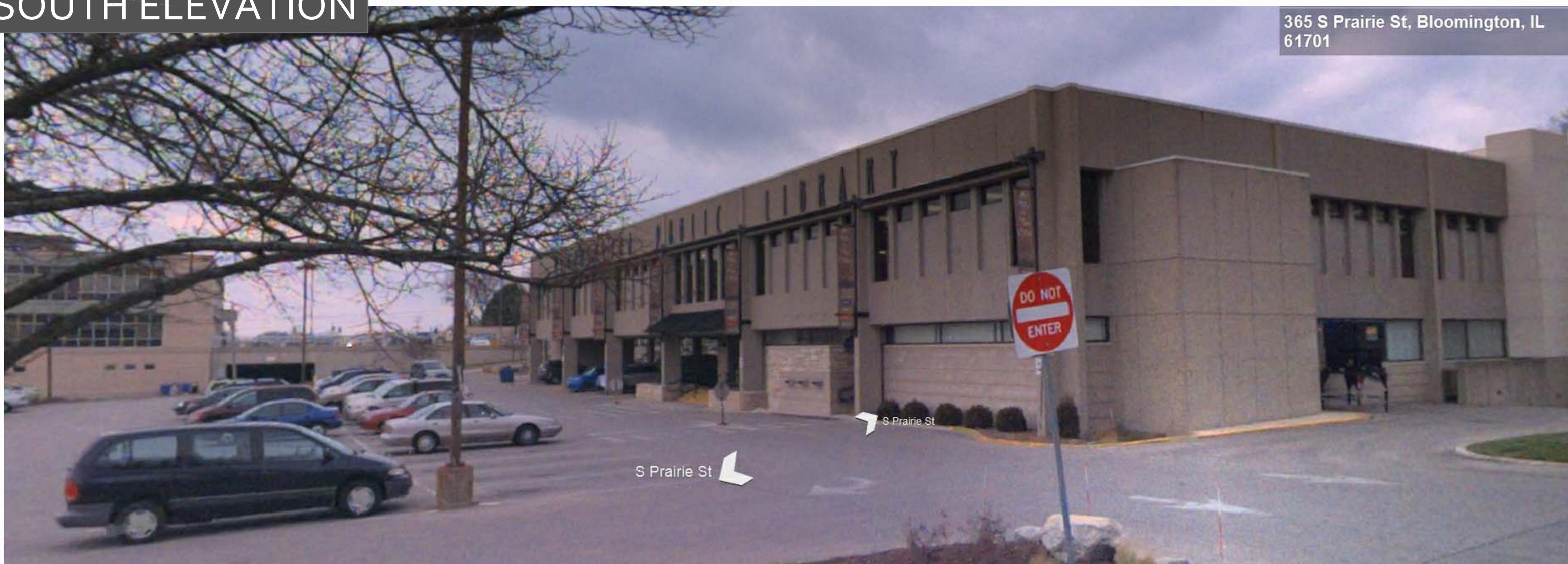
NORTH ELEVATION



WEST ELEVATION



SOUTH ELEVATION



EAST ELEVATION



LIBRARY EXPANSION INPUT SESSION

BUILDING ELEVATIONS  
BLOOMINGTON, IL | 29 OCTOBER 2015

BLOOMINGTON PUBLIC LIBRARY



This information is copyrighted by Farnsworth Group. All rights reserved.

## 10.6 Appendix F – Library Planning Associates Study

For record purposes only, the following previously-prepared report is acknowledged: *Building on Success • Enhancing Services at the Bloomington Public Library*, prepared by Library Planning Associates, Inc., and dated 10 December 2012. Copies of this report are available at the offices of the Bloomington Public Library.