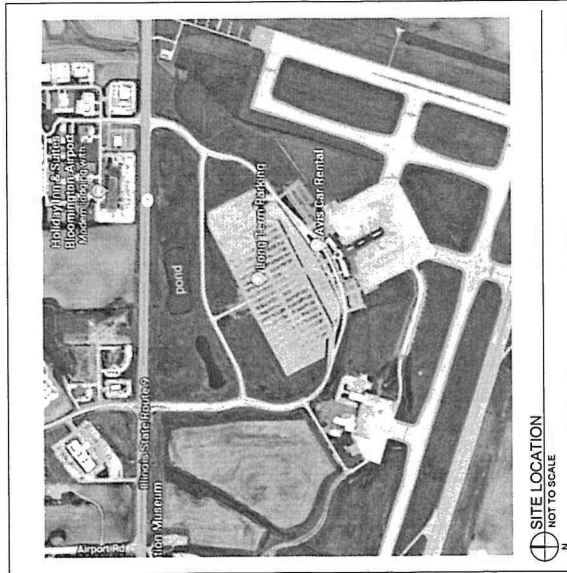


**ILLINOIS STATE UNIVERSITY  
NORMAL, IL  
PROJECT STATUS:  
CIRA**

**CENTRAL ILLINOIS REGIONAL AIRPORT  
CIRA DRIVE, SUITE 200 BLOOMINGTON, IL 61704  
PROJECT GSF = 623 SQ.FT.**

SITE LOCATION



SHEET INDEX

- G1 COVER SHEET
- D1 DEMOLITION PLAN - OPTION 3
- A1 FLOOR PLAN - OPTION 3
- A2 ELEVATION - EXISTING
- A3 ELEVATION - NEW OPTION 3

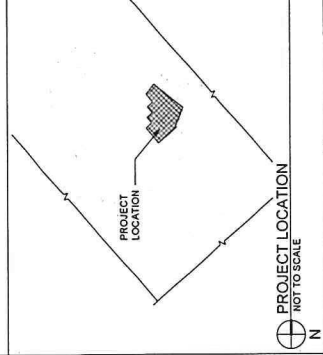
**GENERAL NOTES**

1. ALL WORK TO BE SITE VERIFIED BY CONTRACTOR
2. PROTECT EXISTING SURFACES AND REPAIR BACK TO MATCH EXISTING FINISHES

**SYMBOL LEGEND**

Room name  ROOM IDENTIFICATION & NUMBER

**PROJECT LOCATION**



REVISIONS		
NO.	DATE	BY

DATE	18.07.11
SCALE	AS NOTED
DRAWN BY	YS
PROJECT NO.	180155
DRAWING NO.	

**G1**

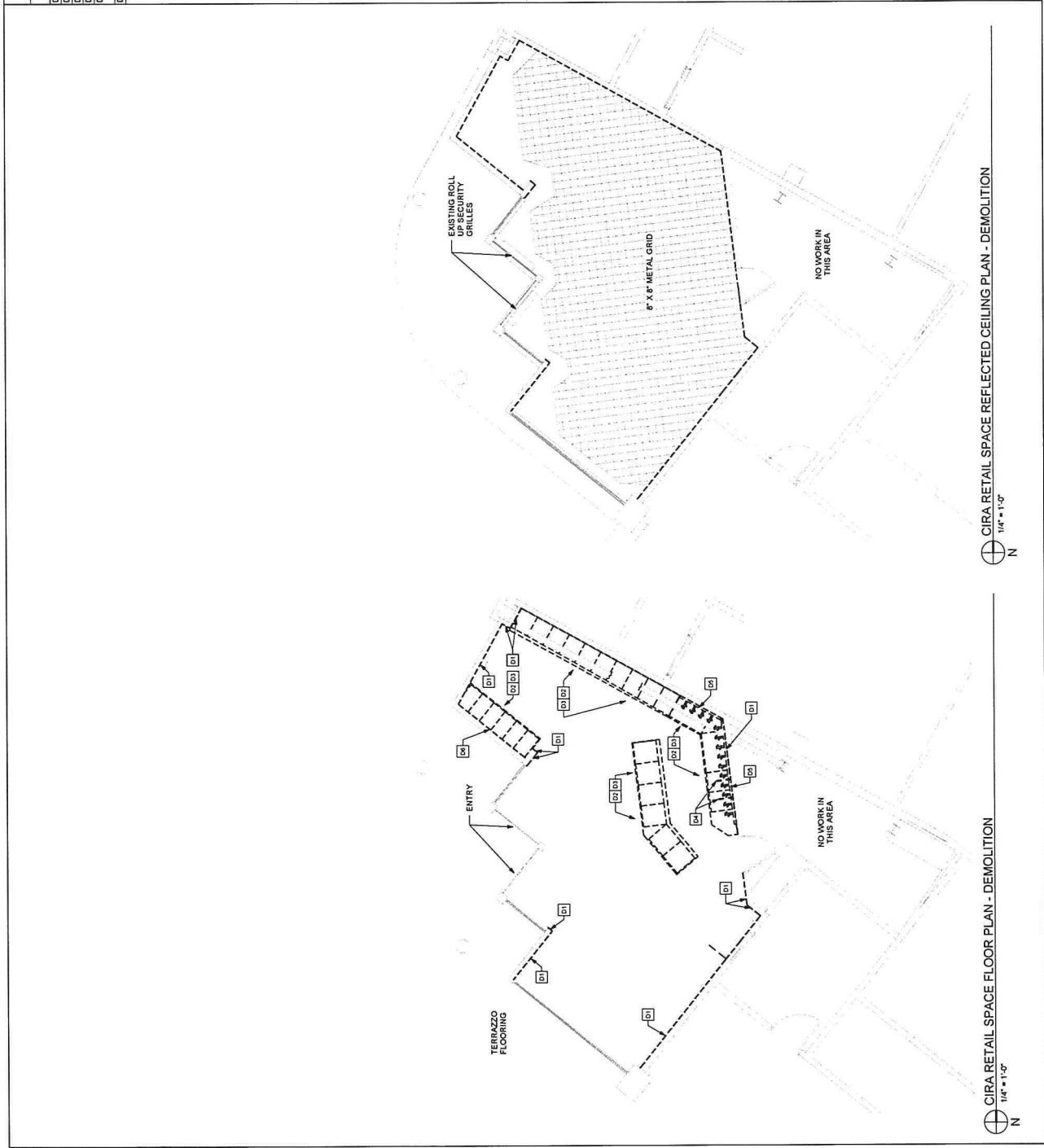
DEMOLITION PLAN - OPTION 3

CIRA

REVISIONS	
NO.	DATE

DATE 18.07.11  
SCALE 1/4" = 1'-0"  
DRAWN BY: YES  
PROJECT NO. 180155  
DRAWING NO. D1

- KEYED NOTES - DEMOLITION
- D1 GENERAL CONTRACTOR TO REMOVE ALL SLATWALL
  - D2 GENERAL CONTRACTOR TO REMOVE ALL BASE CABINET
  - D3 GENERAL CONTRACTOR TO REMOVE ALL COUNTERTOP
  - D4 GENERAL CONTRACTOR TO REMOVE ALL SHELF HANGER
  - D5 GENERAL CONTRACTOR TO REMOVE WIREMOLD AND ASSOCIATED WIRING
  - D6 GENERAL CONTRACTOR TO REMOVE EXISTING MIRROR



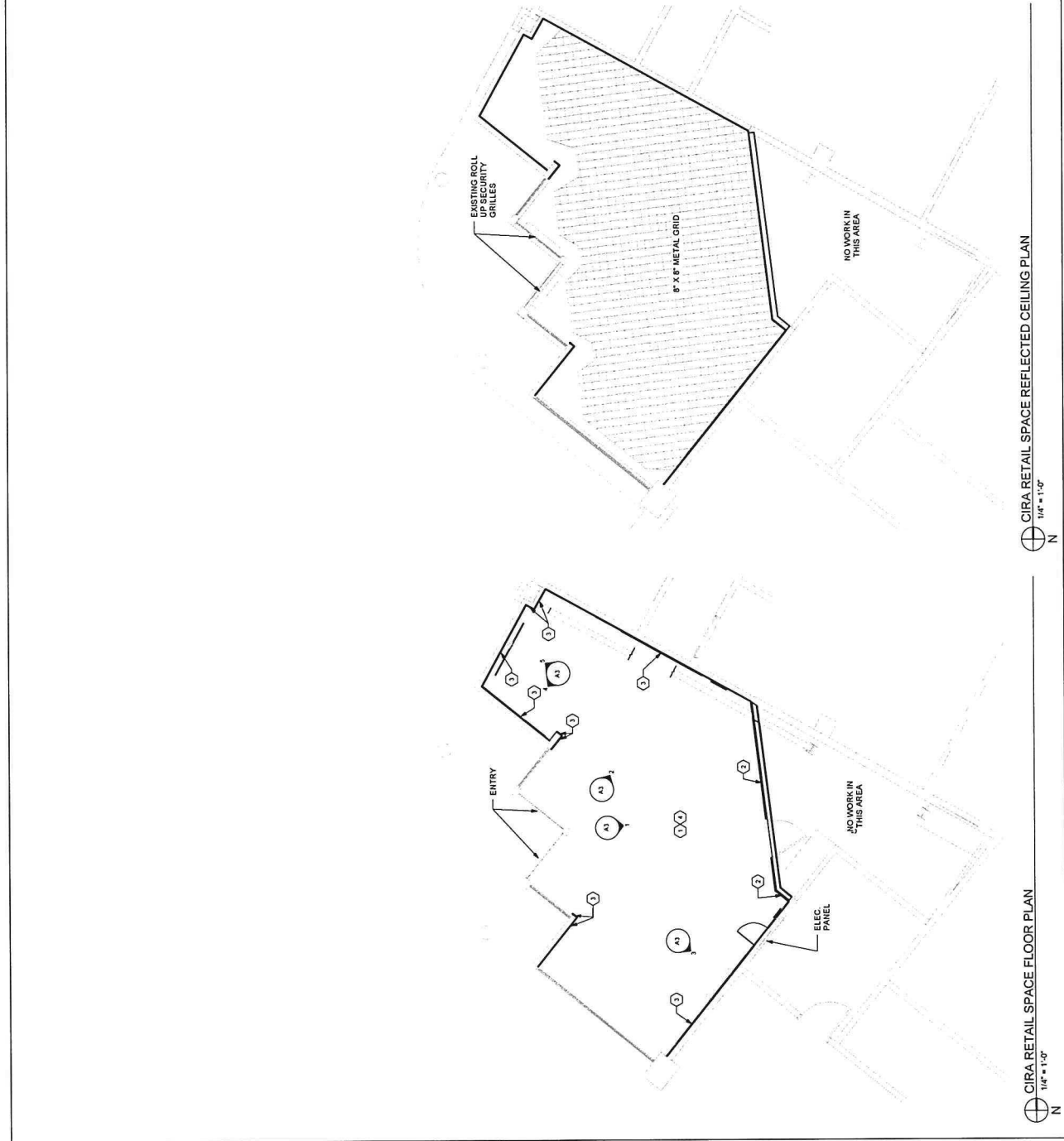
FLOOR PLAN - OPTION 3  
CIRA

REVISIONS	
NO	DATE
DATE	18.07.11
SCALE	1/4" = 1'-0"
DRAWN BY	YS
PROJECT NO.	180155
DRAWING NO.	

A1

KEYED NOTES

- 1 ELECTRICAL CONTRACTOR TO EXTEND ALL ELECTRICAL OUTLET TO NEW FACE OF WALL.
- 2 GENERAL CONTRACTOR TO INSTALL METAL FRAMING WALL WITH 2" GYP. BO. ON INTERIOR SIDE.
- 3 GENERAL CONTRACTOR TO INSTALL 4" GYP. BO.
- 4 GENERAL CONTRACTOR TO INSTALL 4" RUBBER COVE BASE - JOHNSONITE 'BURNT UMBER'.



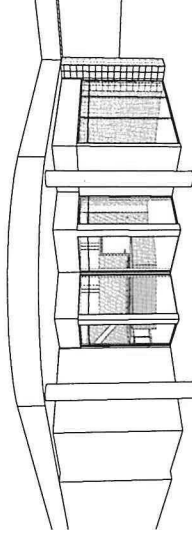
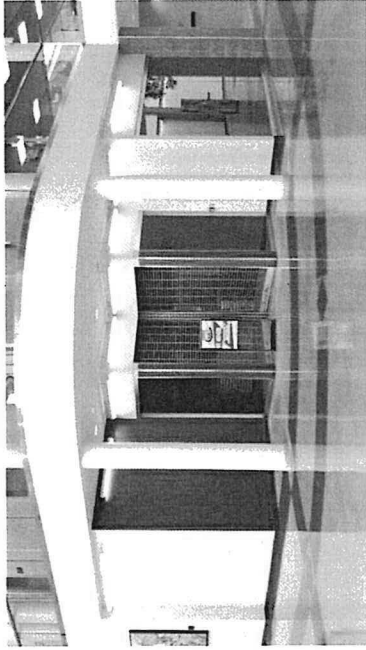
CIRA RETAIL SPACE REFLECTED CEILING PLAN  
1/4" = 1'-0"

CIRA RETAIL SPACE FLOOR PLAN  
1/4" = 1'-0"

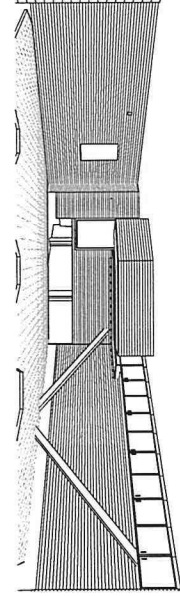
REVISIONS	
NO.	DATE

DATE	18.07.11
SCALE	As Indicated
DRAWN BY	YS
PROJECT NO.	180155
DRAWING NO.	

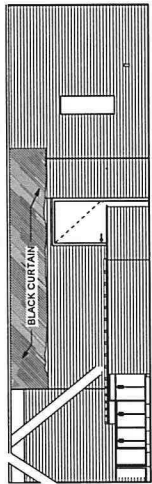
A2



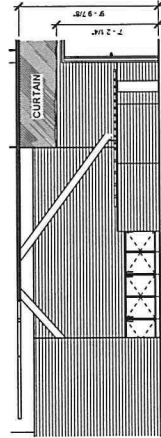
6. 3D VIEW - 1



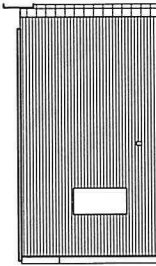
7. 3D VIEW - 2



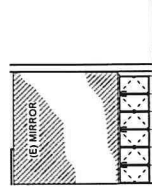
1. ELEVATION 1 - EXISTING  
 1/4" = 1'-0"



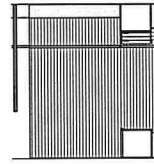
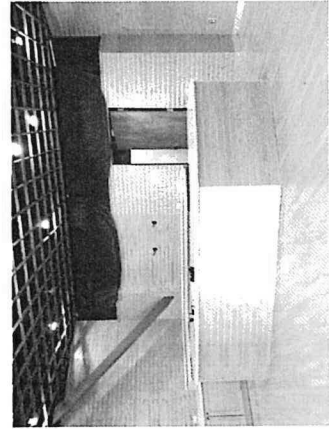
2. ELEVATION 2 - EXISTING  
 1/4" = 1'-0"



3. ELEVATION 3 - EXISTING  
 1/4" = 1'-0"



4. ELEVATION 4 - EXISTING  
 1/4" = 1'-0"

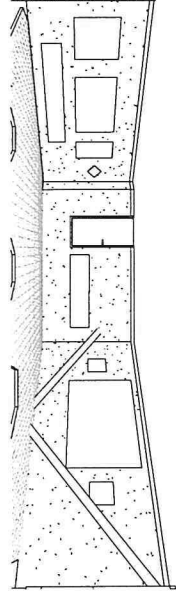
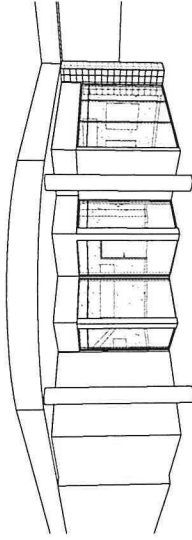
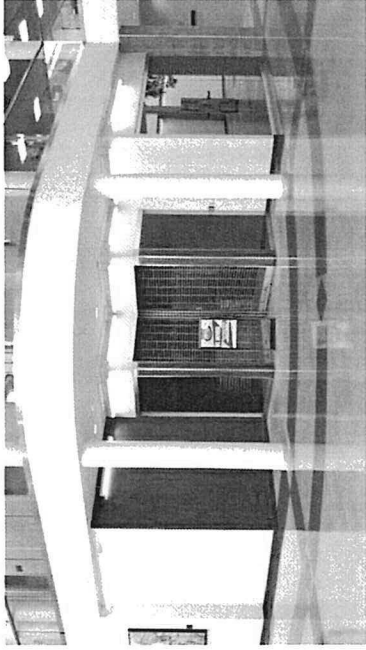


5. ELEVATION 5 - EXISTING  
 1/4" = 1'-0"



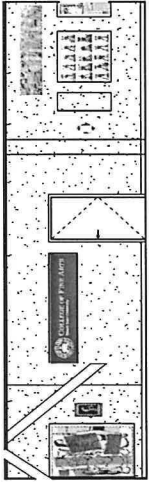
REVISIONS	
NO.	DATE

DATE	18.07.11
SCALE	As Indicated
DRAWN BY	Author
PROJECT NO.	180155
DRAWING NO.	

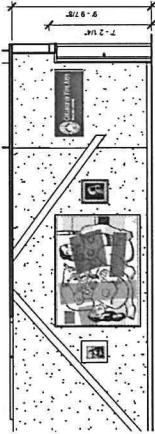


3D VIEW - 1 - STORE FRONT

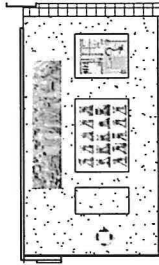
3D VIEW - 2 - INTERIOR FRONT VIEW



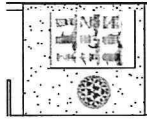
ELEVATION 1  
1/4" = 1'-0"



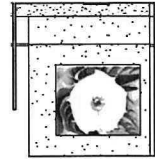
ELEVATION 2  
1/4" = 1'-0"



ELEVATION 3  
1/4" = 1'-0"



ELEVATION 4  
1/4" = 1'-0"



ELEVATION 5  
1/4" = 1'-0"