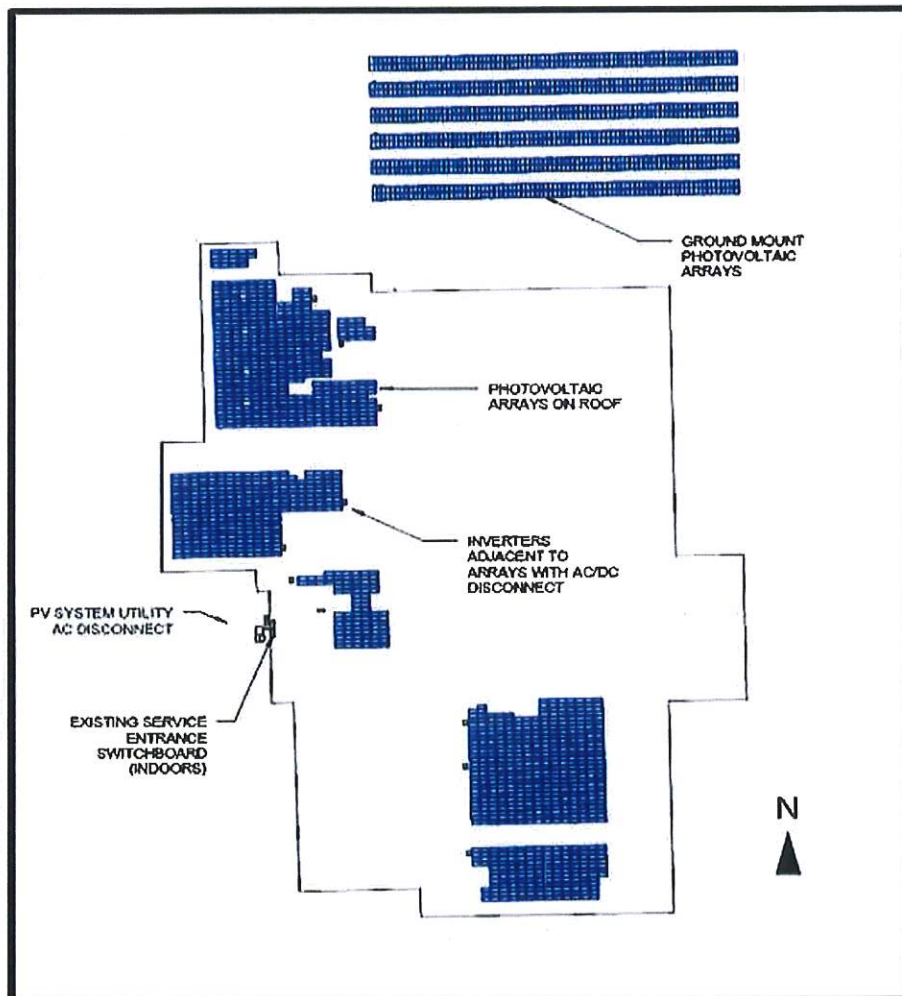


Solar Facility Details

Details of Solar PV System Installed at HSMS

		Location
Structure Type	Multiple Applications	Flat Roof
Quantity of Arrays	11	
System Syze (kW-DC)	843.5	
System Size (kW-AC)	729	
DC-AC Ratio (Estimated)	1.16	
Module Type	JKM355M-72-V	
Optimizer Used	No	
Inverter Model	(1) CPS SCA23KTL, (1) CPS SCA28KTL, (2) CPS SCA36KTL, (8) CPS SCA50KTL, (3) CPS SCA60KTL	
PV System Disconnect	1200 AMP-PV-CT/MAIN/DIST-ALT	Main Electrical Room
Racking		
New Utility Number		
Utility	Corn Belt	



5.0 Equipment List and Location

The table below is a complete inventory of the equipment installed at the site. The manuals and data sheets for each equipment piece, where applicable, are included in the Supplemental Resources of this document, within the Equipment Information section.

Inventory of Materials Installed at HSMS

Equipment Category	Equipment Description	Quantity	Man/Model
Module	Monocrystalline	2376	JKM355M-72-V
Inverter	Chint Power Systems	15	Listed in solar facility details
Point of Common Coupling	Load		Peterson Electrical Panel Manufacturer 1200 A-PV-CT/Main/Dist-Alt
AC Distribution Equipment	AC Panelboard	2	Peterson PVDP-RT and PVDP-GM(QC 18092)
AC Distribution Equipment	AC Switchboard	1	Peterson Electrical Panel Manufacturer 1200A-PV-CT/MAIN/DIST-ALT
	AC Switchboard Name/Factory No.	-	PETERSON ELECTRICAL PANEL MANUFACTURER 1200A-PV-CT/MAIN/DIST-ALT (QC18092)
Data Acquisition System	Data Acquisition Kit	1	LGate 360